

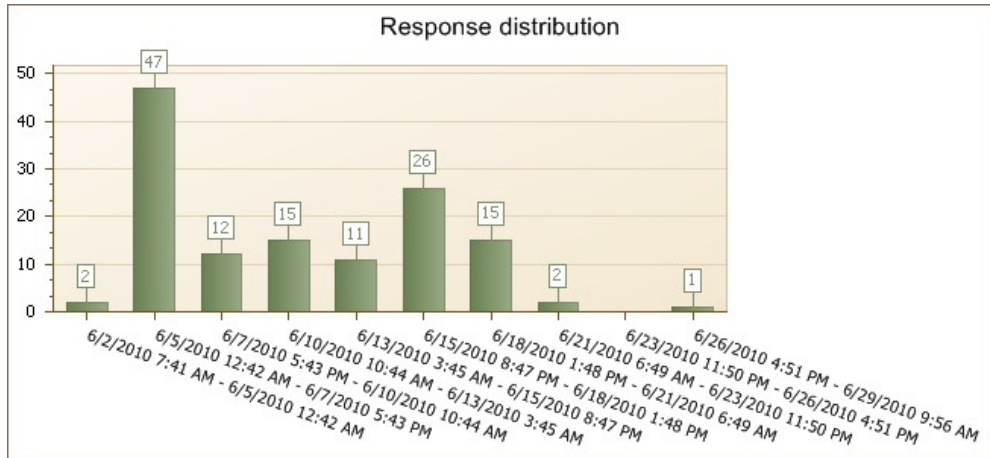
Adelphi Building Our Future

Survey, June 2010

7/2/2010 3:57:41 PM

Summary of surveys in the report

Survey	# Pages	# Questions	Date opened	Date closed	Responses	# Complete responses
Adelphi Building Our Future: Confidential Survey	8	9			131	107



1. Needs: Meeting House

1.1.

Response counts for survey 'Adelphi Building Our Future: Confidential Survey'

	Before filtering	After filtering
Partial responses (unique respondents)	24 (24)	24 (24)
Completed responses (unique respondents)	107 (107)	107 (107)

1.1.1. P3Q1 – White House

Meeting House Needs (White House Needs come next):

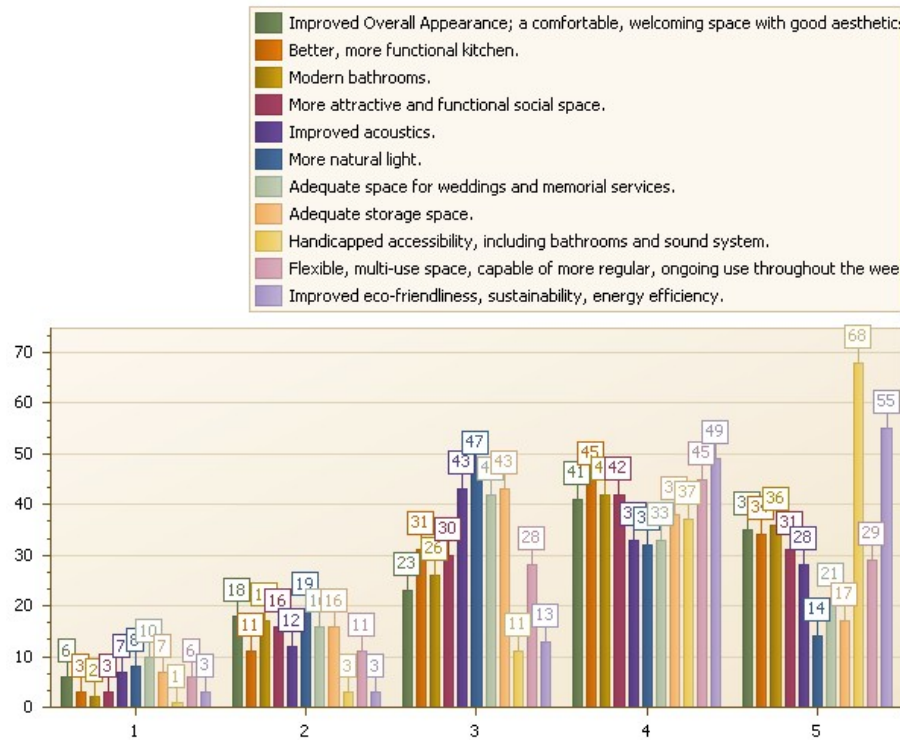
Question type: Matrix & Multimatrix

Number of responses: 127

Number of respondents: 127

Money Should be Raised and Spent on This Need

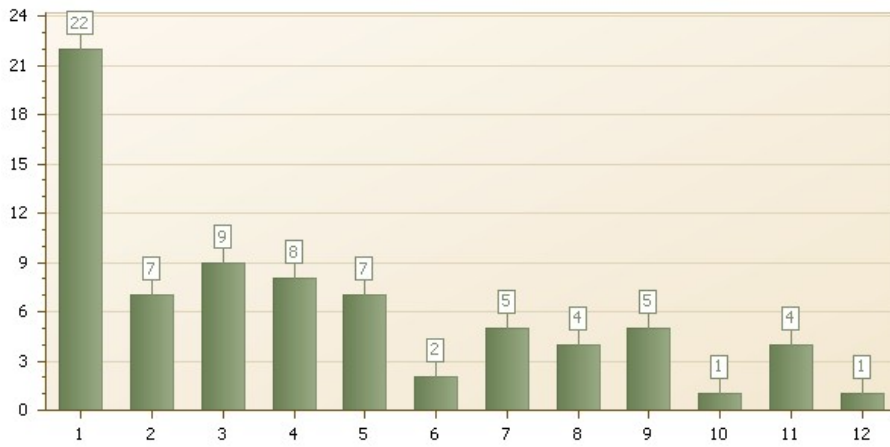
Scale: 1 – 5



Matrix row	Mean	Std dev	Count and % Rating 1	Count and % Rating 2	Count and % Rating 3	Count and % Rating 4	Count and % Rating 5
Improved Overall Appearance; a comfortable, welcoming space with good aesthetics.	3.7	1.2	6 (4.9%)	18 (14.6%)	23 (18.7%)	41 (33.3%)	35 (28.5%)
Better, more functional kitchen.	3.8	1.0	3 (2.4%)	11 (8.9%)	31 (25.0%)	45 (36.3%)	34 (27.4%)
Modern bathrooms.	3.8	1.1	2 (1.6%)	17 (13.8%)	26 (21.1%)	42 (34.1%)	36 (29.3%)
More attractive and functional social space.	3.7	1.1	3 (2.5%)	16 (13.1%)	30 (24.6%)	42 (34.4%)	31 (25.4%)
Improved acoustics.	3.5	1.1	7 (5.7%)	12 (9.8%)	43 (35.0%)	33 (26.8%)	28 (22.8%)
More natural light.	3.2	1.1	8 (6.7%)	19 (15.8%)	47 (39.2%)	32 (26.7%)	14 (11.7%)
Adequate space for weddings and memorial services.	3.3	1.2	10 (8.2%)	16 (13.1%)	42 (34.4%)	33 (27.0%)	21 (17.2%)
Adequate storage space.	3.3	1.1	7 (5.8%)	16 (13.2%)	43 (35.5%)	38 (31.4%)	17 (14.0%)
Handicapped accessibility, including bathrooms and sound system.	4.4	0.8	1 (0.8%)	3 (2.5%)	11 (9.2%)	37 (30.8%)	68 (56.7%)
Flexible, multi-use space, capable of more regular, ongoing use throughout the week.	3.7	1.1	6 (5.0%)	11 (9.2%)	28 (23.5%)	45 (37.8%)	29 (24.4%)
Improved eco-friendliness, sustainability, energy efficiency.	4.2	0.9	3 (2.4%)	3 (2.4%)	13 (10.6%)	49 (39.8%)	55 (44.7%)

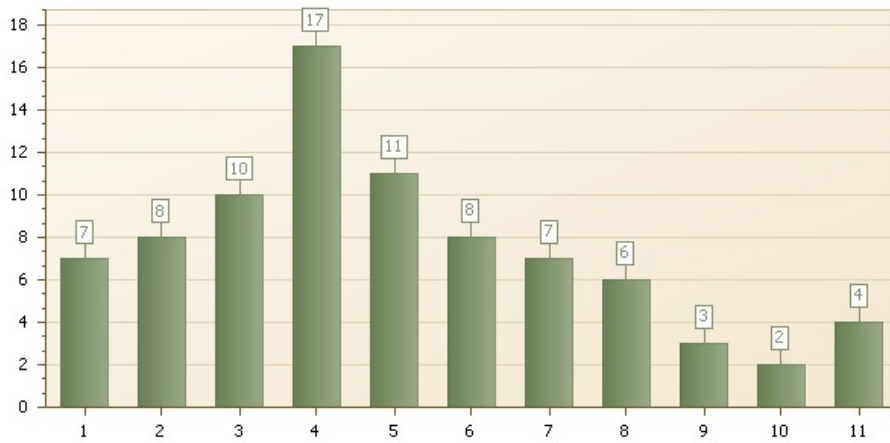
Your Ranking

Improved Overall Appearance; a comfortable, welcoming space with good aesthetics.



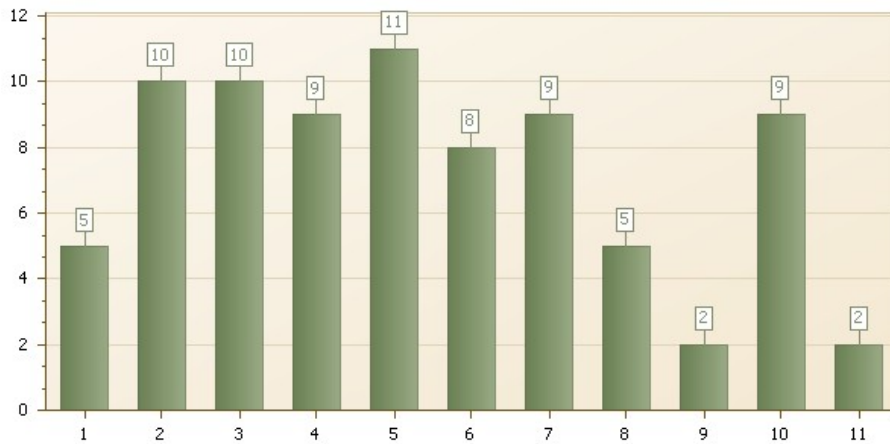
Matrix column	Mean	Std dev	25% quartile	Median	75% quartile
Rank	4.3	3.2	1.0	3.0	7.0

Better, more functional kitchen.



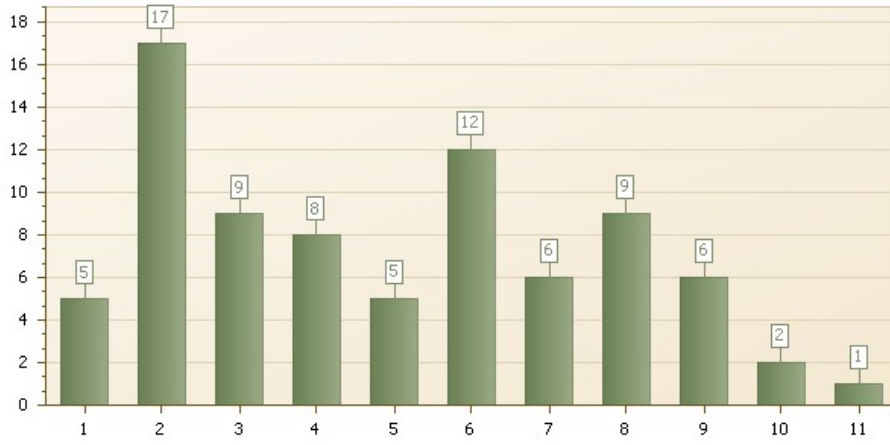
Matrix column	Mean	Std dev	25% quartile	Median	75% quartile
Rank	5.0	2.6	3.0	4.0	7.0

Modern bathrooms.



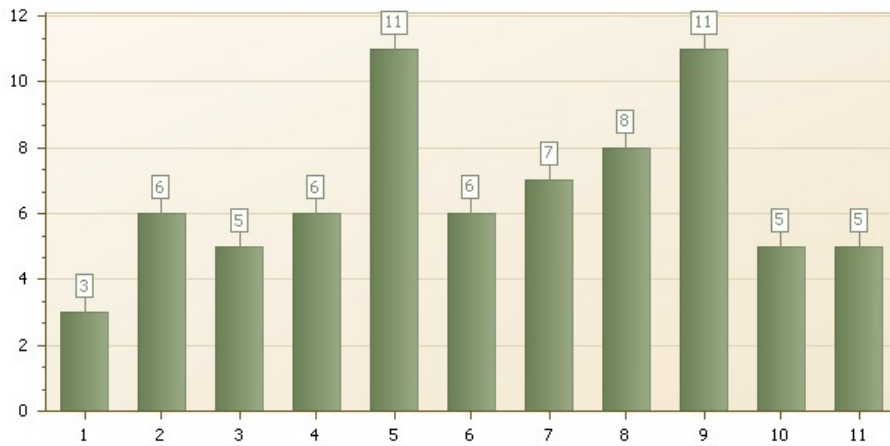
Matrix column	Mean	Std dev	25% quartile	Median	75% quartile
Rank	5.3	2.8	3.0	5.0	7.0

More attractive and functional social space.



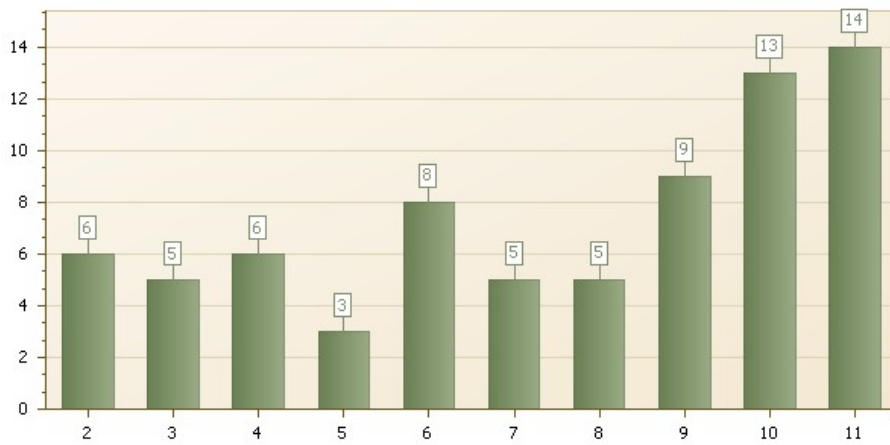
Matrix column	Mean	Std dev	25% quartile	Median	75% quartile
Rank	4.9	2.7	2.0	5.0	7.0

Improved acoustics.



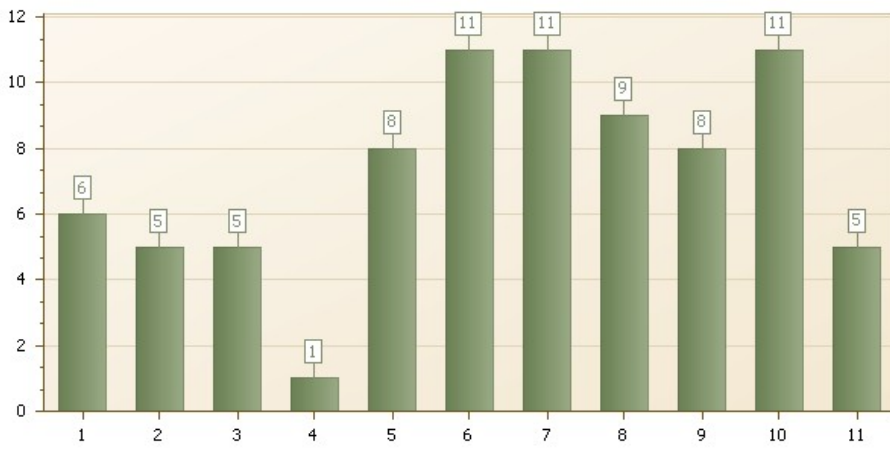
Matrix column	Mean	Std dev	25% quartile	Median	75% quartile
Rank	6.3	2.9	4.0	6.0	9.0

More natural light.



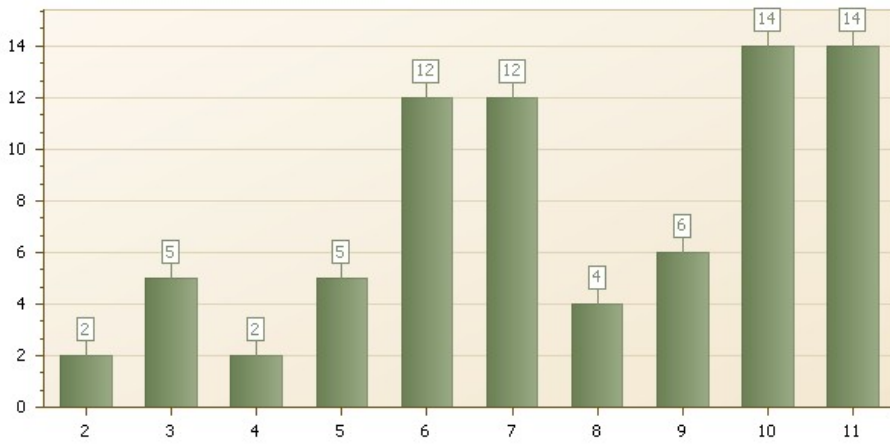
Matrix column	Mean	Std dev	25% quartile	Median	75% quartile
Rank	7.5	3.0	5.0	8.0	10.0

Adequate space for weddings and memorial services.



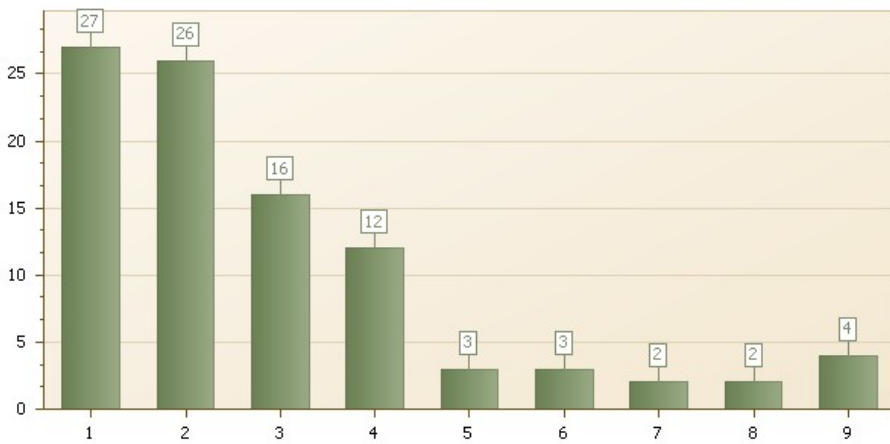
Matrix column	Mean	Std dev	25% quartile	Median	75% quartile
Rank	6.6	2.9	5.0	7.0	9.0

Adequate storage space.



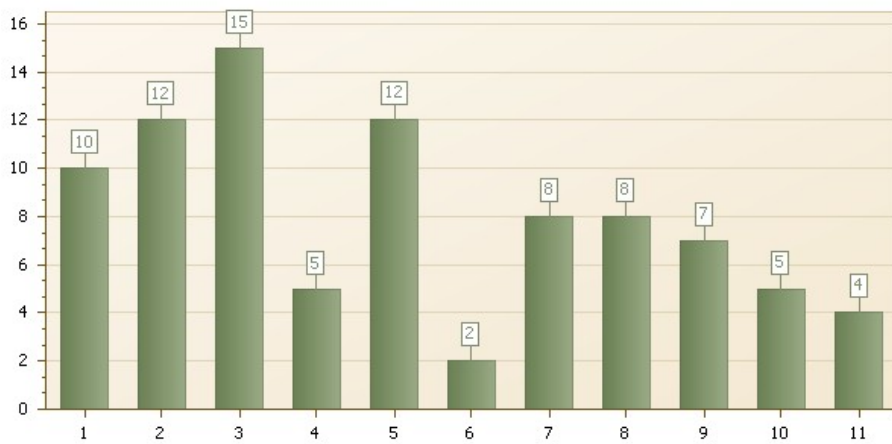
Matrix column	Mean	Std dev	25% quartile	Median	75% quartile
Rank	7.7	2.6	6.0	7.5	10.0

Handicapped accessibility, including bathrooms and sound system.



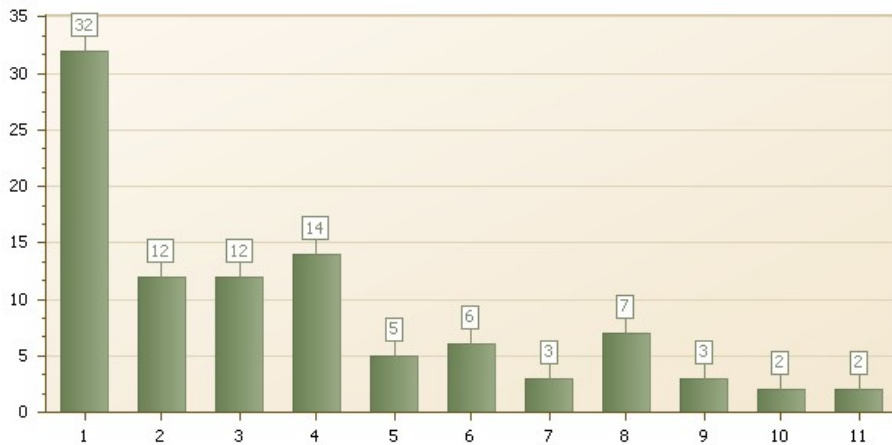
Matrix column	Mean	Std dev	25% quartile	Median	75% quartile
Rank	2.9	2.1	1.0	2.0	4.0

Flexible, multi-use space, capable of more regular, ongoing use throughout the week.



Matrix column	Mean	Std dev	25% quartile	Median	75% quartile
Rank	5.1	3.1	2.8	5.0	8.0

Improved eco-friendliness, sustainability, energy efficiency.



Matrix column	Mean	Std dev	25% quartile	Median	75% quartile
Rank	3.6	2.8	1.0	3.0	5.0

Comments

Date	Respondent	Answer
6/6/2010	Anonymous	The "Flexible multi-use space, capable of more regular ongoing use throughout the week" is a way to SAVE money -- by going to FCS for example. While I support this goal, it is not something I would vote to spend money on.
6/6/2010	Anonymous	Need better accessibility to upstairs bathrooms; thorough remodeling of downstairs bathroom.
6/6/2010	Anonymous	My comments are too numerous to be contained in the space provided. I hope we will get a chance to discuss these issues face to face.
6/6/2010	Anonymous	Energy efficiency of the heating system is one thing. "Eco-friendliness and sustainability" are too vague to know what this would entail. "improved appearance", what does this mean specifically? Changing the whole atmosphere of the meeting room? I oppose that.
6/6/2010	Anonymous	Modern bathrooms would have ranked higher, were it not that I also could choose accessibility.
6/6/2010	Anonymous	For me, the meeting house works well as it is. The meeting room, in particular, is peaceful, spare, simple -- very conducive to meditation. Especially when the electric lights are off. It's hard to cook for large numbers (~50) in that kitchen. And the kitchen is also hard to clean. It does need improvements including commercial-scale appliances. All spaces need to be accessible to people in wheelchairs or using walkers.
6/6/2010	Anonymous	I like the amount light in the meeting house presently. I think greater amount could actually be intrusive as I try to focus inward.
6/6/2010	Anonymous	Need a pavilion for outdoor worship. Think we should have a goal to reduce our carbon foot print to zero. It may cost more money in the short run but critical for our planet.
6/6/2010	Anonymous	I think it's not that we don't have storage right now, it's that we're never sure where a particular thing is. That seems more like an organizational issue to me - also archives could be digitized. The bathrooms could be nicer but I don't know about "modern". I think the aesthetics of the meetinghouse could certainly be improved - simple doesn't have to mean cinderblock.
6/6/2010	Anonymous	solar panels or geothermal assist with energy use in an effort to use less traditional energy forms
6/6/2010	Anonymous	Ranking is harder than voting initially.
		I have been in Meeting rooms much bigger than Adelphi's where the 'natural sound' was superior. Improved design should be considered before

6/6/2010	Anonymous	wiring us for a sound system. M&C should also encourage speakers to speak out! During the major rebuild of the White House prior to the location of FCS over there, two accessible bathrooms were built in the White House, and the route is accessible from MH to WH. Why not provide signage pointing the way to these facilities? While we are 'here', why not re-design the lobby to include 1 male/female handicapped bathroom in the MH and send other folk to the WH?
6/6/2010	Anonymous	After ranking #6, I don't have strong opinions about the rest of the needs. After growing up in a church that prioritized raising and spending millions on an unneeded fancy new church building, with very little attention to social service, I am very wary of getting caught up in fulfilling "needs" that aren't truly needs. Since I haven't taught First Day School in years, I'm not in touch with the real needs there; and I am sure that there are many true needs of the Meeting that I simply don't know enough about. What I do know is that I want us to remember that we should be working to meet the real needs of our treasured Meeting in ways that are simple, efficient, and true. I treasure our shabby buildings particularly because we haven't placed high value on aesthetics over the real priorities of gathered community. Most important to me is that all of us currently attending Meeting, AND all folk who need handicapped accessibility to attend now and in the future, feel welcomed, able to attend, and an ongoing treasured part of our Meeting community. Although I'm strongly attached to our current location and buildings, what is most important to me is that our people are still together and we can hold Meeting in a place in which we can literally hear one another in speaking the Word of the Spirit (unlike the FCS gym, for example).
6/6/2010	Anonymous	Strongly disagree that we need to have a bigger space for meeting for worship just for weddings and memorial services. We have big meetings near us already.
6/6/2010	Anonymous	I think we should look at moving to the FCS site and build a new meeting house there.
6/6/2010	Anonymous	I'm more interested in sustainability and good stewardship than in increasing our capacity. I don't understand where the money will come from and think that sharing our resources with those less fortunate is more important than making big improvements.
6/6/2010	Anonymous	Spending money for the sake of appearance alone is contrary to basic friends testimonies. Function Yes, Modern NO,
6/7/2010	Anonymous	Obviously, handicapped accessibility which includes bathrooms, entries, and acoustics is my biggy. EnergyStar appliances in the present kitchen with a bit of sprucing would be sufficient. Space enhancement is not high on my list.
6/7/2010	Anonymous	Although the Meeting is exempt from the ADA being a non-profit "church" as Quakers were among those most pushing for true equality, we should honor the requirements of the ADA and make the Meeting full accessible, including fully accessibly bathrooms.
6/7/2010	Anonymous	These improvements seem self-evident, and, of course, must be mitigated by other factors.
6/7/2010	Anonymous	I ranked better social space first because to me the basement is embarrassingly shabby as is the kitchen and bathrooms. I also feel strongly that we should incorporate as many "green" features as possible.
6/7/2010	Anonymous	The bathroom fixtures are fine, but the stall is too small. It could be enlarged without enlarging the room. However, to make the bathroom handicapped-accessible would probably involve enlarging the entire room and putting in a different sink and toilet. Water-saving toilets would add to eco-friendliness.
6/8/2010	Anonymous	Generally I question whether it's worth spending more money for most of these items. Energy efficiency is my only "agree" precisely because it would save money. I'd rather see Friends donate more money to the needy than have to donate more money to the Meeting for our building. But certainly I agree that some of these needs are true needs -- such as handicapped accessibility -- so I leave it to others to determine what renovations or move can accomplish those most frugally.
6/8/2010	Anonymous	Many of the above items I would have ranked on an equal basis, but being forced to rank with no two needs ranked with the same number made me make some very difficult decisions! I'm not sure I would rank it the same way if asked to do it over again.
6/8/2010	Anonymous	I am satisfied with unranked items (does not mean they are unimportant, just that I wouldn't spend on them just now)
6/9/2010	Anonymous	Some of the items rated lower were done so because it's my hope that if we fix and update space for other reasons we can do that in a way that is more flexible, capable of greater use, and is energy efficient. I.e. they are intertwined not less important.
6/11/2010	Anonymous	the views that i have expressed in this section in no way mean that i think that we should move to friends community school. issues such as a more functional kitchen and adequate storage space do not necessarily exist- it seems to me that we are functioning fairly well with the resources we have. in addition if making a greener building means huge amounts of construction then it is better to stay the way we are.
6/11/2010	Anonymous	How about "spiritual and meditative setting" as a criteria?
6/11/2010	Anonymous	I have already completed this survey and sent it by e-mail. I am concerned that it did not get through. Suzanne Costilo
6/11/2010	Anonymous	As Presiding Co-clerk of Friends Meeting of Washington I visit Adelphi Friends Meeting only one or two times a yer and so have few occasions to form an opinion on these matters.
6/12/2010	Anonymous	Although Adelphi is not as "beautiful" a space as other meeting houses in the region, I am relatively satisfied with the comfort, size, and aesthetics. The main reason I can see for improvement is to transform it into something that can be used for other purposes for often, which might also generate income for the meeting.
6/13/2010	Anonymous	Its time we did something to make our buildings and spaces more attractive, accessible and energy-efficient. I would support extensive renovations to the meetinghouse and less in the white house, mostly due to financial considerations. If we had the money, I'd tear down the meetinghouse and build a new one on the same site and renovate the white house extensively.
6/14/2010	Anonymous	A solution to the long-term flooding issues in the basement is #1 on my list!
6/14/2010	Anonymous	It seems to me that some of these categories overlap. I kno it is hard not to do this. Improved overall appearance etc. really, in my opinion, is as more general statement that includes a better kitchen, modern bathrooms, a more attractive social space, improved acoustics, handicap accessibility and adequate space for weddings and memorial services.It's hard to rate which comes first as they go together.
6/16/2010	Anonymous	I think that most of these things (Functional kitchen, good weekday space, sustainability, good aesthetic) we already do FANTASTICALLY
6/16/2010	Anonymous	I haven't been attending the Meeting long enough to have strong opinions on needs. My main impression is that the Meeting House is a very good one and is adequate for all essential needs. It isn't very accessible for physically handicapped people but I don't know if there is high demand for it. I'm interested in making all structures more energy efficient & ecologically sustainable but it's not clear what can be done within reasonable expense.
6/17/2010	Anonymous	Attractive and functional social space is about the same as adequate space for weddings and flexible, multi-use space in my mind.
6/17/2010	Anonymous	note: handicapped accessible bathroom *is* important; "more modern" bathroom less so.

6/17/2010	Anonymous	I find the space very pleasing right now and primarily want the handicapped and safety issues taken care of. I only care about modern bathrooms to the extent that I want them comfortable and handicapped accessible. To make our space more eco friendly does not necessitate a complete re-build but rather a more "conservative" approach would be appropriate modifying instead of knock down and re-build. I do not want a meeting space large enough for LARGE events that would destroy the lovely intimacy that we are capable of in the worship space we have. The natural light in the sanctuary is wonderful the basement could use more.
6/18/2010	Anonymous	The spaces need to be safe and healthy for use by our children and ourselves.
6/19/2010	Anonymous	I think we should have ONE "Family Bathroom" on the upper floor of the meeting house. It would have wheel chair accessibility and accomodate everyone, one person at a time.
6/19/2010	Anonymous	i think acoustics is important but have included it in handicapped accessibility. as to baths, the basement bath is the priority and it is good to have at least one shower/bath available for when folks stay overnight.
6/19/2010	Anonymous	Protecting the environment seems a top priority for everything we do at this time. I would only support fundraising and spending money on modest improvements to the current facilities. They might not be spiffy, but that's a plus. No one has to be too concerned about maintaining their beauty. They are functional as they are, but I would support spending to make them function better, if the spending is limited.
6/20/2010	Anonymous	If bathrooms are not handicapped accessible need to fix this by providing a hands up accessible bathroom in meeting or white house. Basement needs ventilation more than light.
6/29/2010	Anonymous	If the decision is to remain at the current location, then these are the improvements that I would like to see. If the decision is to move to a new location (i.e., co-locating with Friends community school) then I would like to see this incorporated into the new building.

2. Needs: White House

2.1.

Response counts for survey 'Adelphi Building Our Future: Confidential Survey'

	Before filtering	After filtering
Partial responses (unique respondents)	24 (24)	24 (24)
Completed responses (unique respondents)	107 (107)	107 (107)

2.1.1. P4Q1 – White House

White House Needs:

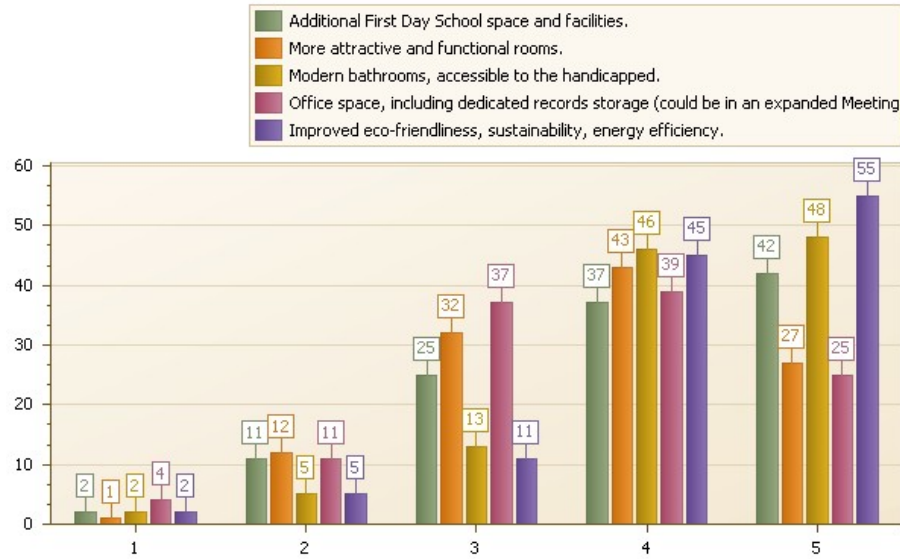
Question type: Matrix & Multimatrix

Number of responses: 121

Number of respondents: 121

Money Should be Raised and Spent on This Need

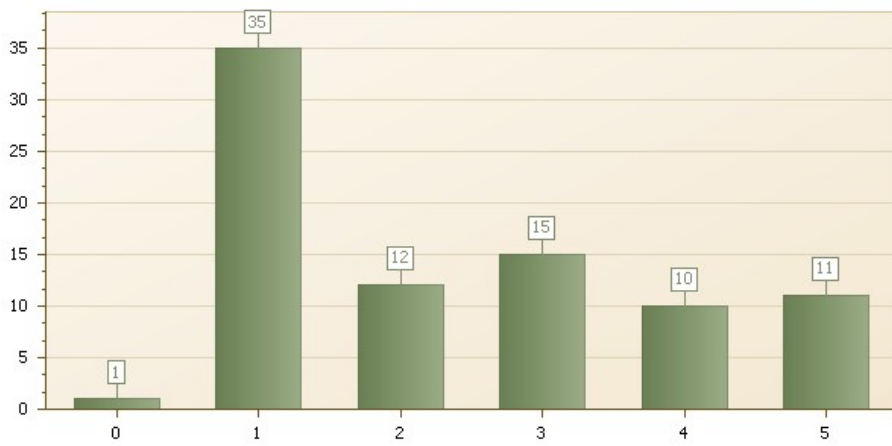
Scale: 1 – 5



Matrix row	Mean	Std dev	Count and % Rating 1	Count and % Rating 2	Count and % Rating 3	Count and % Rating 4	Count and % Rating 5
Additional First Day School space and facilities.	3.9	1.1	2 (1.7%)	11 (9.4%)	25 (21.4%)	37 (31.6%)	42 (35.9%)
More attractive and functional rooms.	3.7	1.0	1 (0.9%)	12 (10.4%)	32 (27.8%)	43 (37.4%)	27 (23.5%)
Modern bathrooms, accessible to the handicapped.	4.2	0.9	2 (1.8%)	5 (4.4%)	13 (11.4%)	46 (40.4%)	48 (42.1%)
Office space, including dedicated records storage (could be in an expanded Meeting House).	3.6	1.0	4 (3.4%)	11 (9.5%)	37 (31.9%)	39 (33.6%)	25 (21.6%)
Improved eco-friendliness, sustainability, energy efficiency.	4.2	0.9	2 (1.7%)	5 (4.2%)	11 (9.3%)	45 (38.1%)	55 (46.6%)

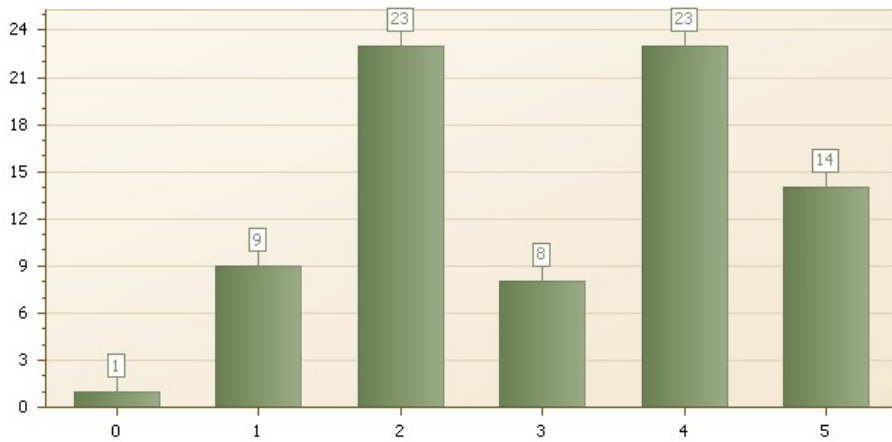
Your Ranking

Additional First Day School space and facilities.



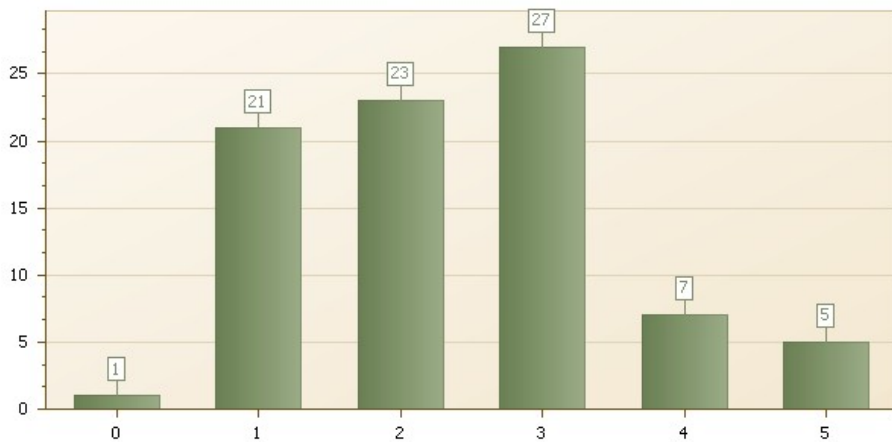
Matrix column	Mean	Std dev	25% quartile	Median	75% quartile
Rank	2.4	1.5	1.0	2.0	3.3

More attractive and functional rooms.



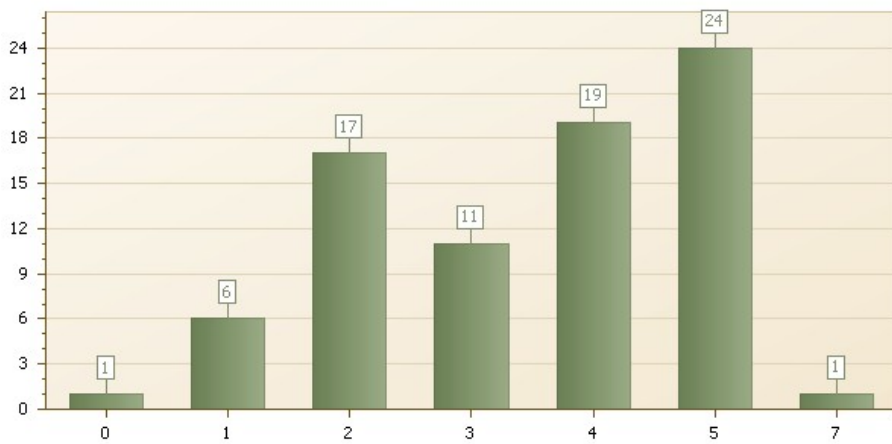
Matrix column	Mean	Std dev	25% quartile	Median	75% quartile
Rank	3.1	1.4	2.0	3.0	4.0

Modern bathrooms, accessible to the handicapped.



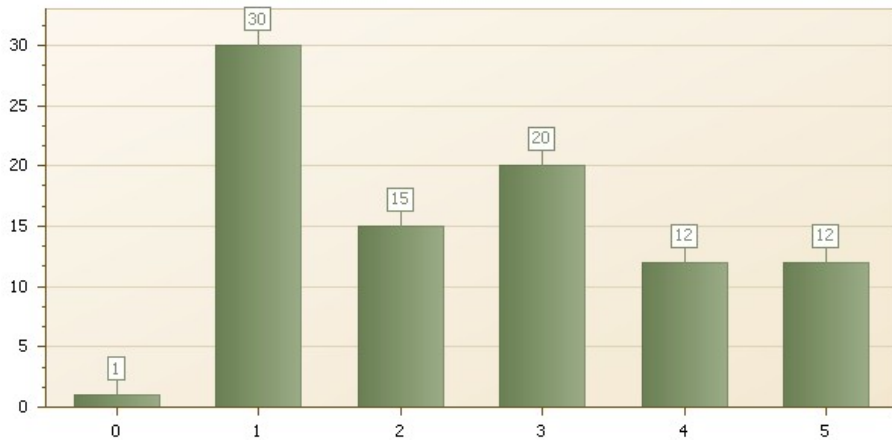
Matrix column	Mean	Std dev	25% quartile	Median	75% quartile
Rank	2.4	1.2	1.0	2.0	3.0

Office space, including dedicated records storage (could be in an expanded Meeting House).



Matrix column	Mean	Std dev	25% quartile	Median	75% quartile
Rank	3.5	1.4	2.0	4.0	5.0

Improved eco-friendliness, sustainability, energy efficiency.



Matrix column	Mean	Std dev	25% quartile	Median	75% quartile
Rank	2.5	1.4	1.0	2.0	4.0

Comments

Date	Respondent	Answer
6/6/2010	Anonymous	Bathrooms should be in good order. Facilities should be handicapped accessible within the bounds of reasonable cost. I think archives should be electronic, with a hardcopy back-up given to Swarthmore College every year.
6/6/2010	Anonymous	"improved eco-friend." is too vague, what changes would be made?
6/6/2010	Anonymous	I haven't taught first day school for many years. I don't know if we're short on space. The rooms on the ground floor and the second floor seem to me very pleasant, usable, functional. I gave a 4 to "More attractive and functional rooms" only because of the basement classroom, which is really pretty depressing because of the lack of natural light.
6/6/2010	Anonymous	Young friends will learn about the importance of sustainability with a building that has a zero carbon foot print. The pavilion will be critical to this.
6/6/2010	Anonymous	Would be nice to move first day school out of the meetinghouse basement - junior meeting, esp., is audible. I agree the design of the white house is convoluted for our purposes.
6/6/2010	Anonymous	How does the discussion of facilities relate to our mission? How does it relate to the rest of the Long-Range Planning report?
6/6/2010	Anonymous	Taller eco friendly toilets!
6/6/2010	Anonymous	Does 'on-line' storage require space in an office on Metzert Rd. What is the final planned destination for records? There should be a plan in place for this, rather than just creating space to be cluttered with musty drawers.
6/6/2010	Anonymous	It seems to me of utmost importance that we make all of our facilities handicap-accessible so that we are not carelessly excluding F/friends with physical "disabilities" from being a full part of our community. Otherwise, again in the matter of the White House, I yield the responsibility of identifying the needs of our children, etc., to folk who are more involved and thus wiser about what is truly needed. I would again ask that we be very careful to be centered in the Spirit when we identify our needs to be sure they are true. I do not want our community to be distracted from what is important by a search for money and facilities to a degree that is not truly needed.
6/6/2010	Anonymous	I think we should look at moving to the FCS site and build a new meeting house there

6/6/2010	Anonymous	Bathrooms: Accessible YES, Modern NO No spending for the sake of appearance alone. Do not use accessibility as a cover for spending on aesthetics!
6/6/2010	Anonymous	I feel that we should only spend money on safety issues of the buildings
6/7/2010	Anonymous	Two more classrooms would be good. Handicapped accessibility on more than the first floor would be nice. A stair seat would work. All improvement work should be eco-friendly.
6/7/2010	Anonymous	I gave the same rankings to items that were the same or similar. Thanks!
6/7/2010	Anonymous	The building is functionally obsolete, probably not repairable, and almost surely has to be replaced entirely.
6/7/2010	Anonymous	I am not familiar with the upstairs rooms. The downstairs seems fine, but the basement room is not good.
6/8/2010	Anonymous	I consider these white house needs to be greater than the Meeting house needs. Adelphi needs to have better space for families with children and youth.
6/8/2010	Anonymous	The reason why I keep ranking eco-friendliness first for money is because to me, it is a priority, but it is also generally one of the most expensive things to do, whereas making room more attractive and functional could be as simple as moving the furniture around, or knocking out a single wall etc.
6/8/2010	Anonymous	first day school in the basement is barely adequate (musty, occasionally wet). Other rooms (that I have been in) seem adequate
6/9/2010	Anonymous	There should be a decent, realistic sized, functional room for each class.
6/9/2010	Anonymous	Same comment as on Meetinghouse in terms of ranking.
6/11/2010	Anonymous	i think that most things are okay the way that they are if we continue to make the small improvements that we have been making- the new door and set of steps. also for many options that have been proposed (not necessarily just here) how are we going to fund-raise that much money?
6/12/2010	Anonymous	It certainly would be good to make Adelphi more eco-friendly, but perhaps not at an enormous expense.
6/13/2010	Anonymous	A proper library would also be welcome.
6/13/2010	Anonymous	The white house needs a facelift, in my opinion, but not extensive renovations.
6/14/2010	Anonymous	Again many of these statements seem to go together. They all need to be done.
6/16/2010	Anonymous	I'd oppose the alteration of the JYF and YF rooms! they have a lot of history and comfort.
6/16/2010	Anonymous	Haven't attended long enough to assess whether more space is needed for 1st Day School, other activities or office space. The bathrooms on the main floor already seem fairly accessible. The house doesn't look very energy efficient but improvements in that direction may be more expensive than it's worth given the level of use. However, I am very interested in investigating possibilities.
6/17/2010	Anonymous	Many of the first day school rooms have a wonderful history and tradition in the program and should not be changed except a mild clean-up. The Young Friends, both high school and middle school, are very happy with their rooms and as a teacher of both groups for many years, I agree. We have never had too many children for the spaces we already have. However, the basement of both the white house and Meeting house classrooms need to be worked on - an extension of the white house would be my choice. An addition that could fit two classrooms and make the basement of the white house into a records room. The baby room could be changed to be more geared to the babies with very little other than the vision of a baby's and toddler's needs to do it. Get rid of all that grown-up furniture. Again - I feel the bathrooms should be functional - not modern other than handicap accessible.
6/18/2010	Anonymous	The function aspect is most important.
6/19/2010	Anonymous	i kind of like the "library" now, but because it has to a classroom as well as a committee meeting/social room, it doesn't function well as either.
6/19/2010	Anonymous	We all need to do better at protecting the environment. What goes on in the rooms is more important than the attractiveness of the rooms. So, I oppose using Meeting fundraising to spend more than a small amount on beautifying Meeting spaces. Improving safety and functionality of meeting spaces and doing adequate upkeep to keep the facilities from degrading all seem important.
6/20/2010	Anonymous	I think the kitchen and basement of meeting could be renovated and the space much improved. Ventilation needs to be addressed in the basement. The white house basement is even more pressing. NOt a good space for first day school, but renovation and better ventilation would fix this. If there is no handicapped access in the bathrooms (either meeting house or white house) need to fix this to provide one.
6/20/2010	Anonymous	With structural and organizational improvements I believe our current space could be more attractive, welcoming, accessible, and efficient. I do support improving the place one already is, for environmental reasons unless a highway is built next door.
6/20/2010	Anonymous	All the White House needs are evident, however, the white house is wholly inadequate and irreparable. The building should be replaced.
6/20/2010	Anonymous	Clean, functional (includes handicapped accessible), and aesthetically pleasing would be great. Simplicity for weekly community use. Large weddings, funerals not essential.

3. Location

3.1.

Response counts for survey 'Adelphi Building Our Future: Confidential Survey'

	Before filtering	After filtering
Partial responses (unique respondents)	24 (24)	24 (24)
Completed responses (unique respondents)	107 (107)	107 (107)

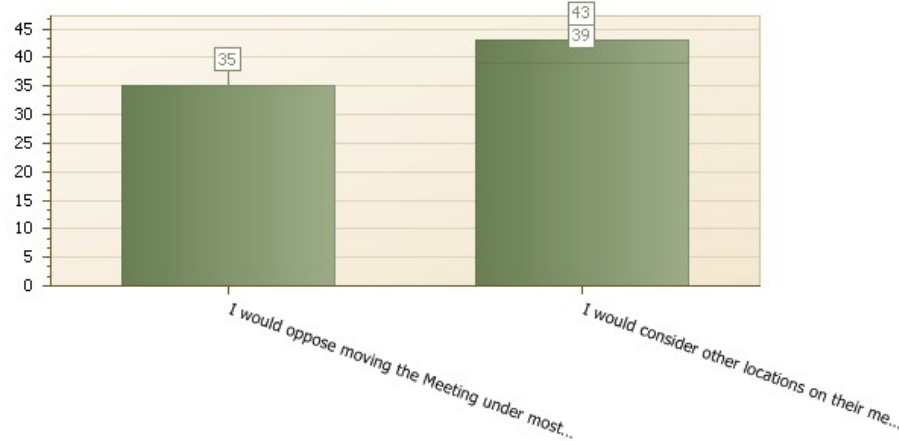
3.1.1. P5Q1

Moving away from our present location. Please check the response that most closely expresses your position.

Question type: Multiple choice

Number of responses: 121

Number of respondents: 121



Answer	Count	Percent answer	Percent respondent
I would oppose moving the Meeting under most circumstances.	35	29.9%	26.7%
I would consider other locations on their merits, but I have a strong preference to stay where we are.	43	36.8%	32.8%
I would consider other locations on their merits.	39	33.3%	29.8%

Comments

Date	Respondent	Answer
6/6/2010	Anonymous	I liked our meeting at FCS, but I am concerned about how it would affect the character of our meeting. I frankly don't know.
6/6/2010	Anonymous	the strongest reason to move, in my view, would be to allow those without cars to access AFM. any decision would also need to be supported with analysis. at present we seem to have 3 centers of attender residence: Hyattsville, Greenbelt, and Takoma Park. any new location would have to be positioned to balance these.
6/6/2010	Anonymous	I like the meeting where it is but I won't "oppose" anything. That makes it sound like we're at war with each other.
6/6/2010	Anonymous	I would oppose moving the Meeting under ANY circumstances.
6/6/2010	Anonymous	Present location is pretty good.
6/6/2010	Anonymous	These options are skewed towards staying at present location.
6/6/2010	Anonymous	If Meeting moves, I'd prefer it to move to Takoma Park.
6/6/2010	Anonymous	FSC is closer to me, wants a quaker meeting and is already energy efficient.
6/6/2010	Anonymous	You will not find a better location than what we have. The grass is not greener over there!
6/6/2010	Anonymous	I have no attachment to the current location.
6/6/2010	Anonymous	Ideally, I would like to see 4 small meetings evolve in the following locations: Adelphi, FCS, Takoma Park, and Greenbelt.
6/6/2010	Anonymous	I think we should look at moving to the FCS site and build a new meeting house there
6/6/2010	Anonymous	A location with a likelihood of first day public transit access would be a plus but it is not the do all and end all.
6/7/2010	Anonymous	It would have to be a very special place without need for enormous outlay to cause me to want to move the meeting location.
6/7/2010	Anonymous	I grew up in the Meeting and have many fond memories of the space, so I would be very sad to leave it.
6/7/2010	Anonymous	And i will need to bend my will to the Spirit as this process unfolds.

6/8/2010	Anonymous	I have a slight preference to stay where we are, as it will stress our community bonds to move.
6/8/2010	Anonymous	I love where the meetinghouse is. I love the grounds and the field and the in between location for attenders that live in DC or closer versus attenders that live further out in Maryland. I love the white house and the Young Friends attic room and the simplicity of the meeting house as is.
6/8/2010	Anonymous	moving the meeting will cause some people to seek other spiritual homes, and enable some new people to come. This is more likely to affect more recent members (and perhaps more among attenders than members?). If the meeting were to move as far as FCS, I would predict a largish turnover (and while you might hear from people who will move away, you will not hear from the future members, so this is tough to survey!)
6/9/2010	Anonymous	This is a beautiful property centrally located for many of our members. Land is hard to come by and expensive today, and the Memorial Garden has added a sacred dimension to the wonderful resource we already have. I also like knowing the tot lot and property provide solace to neighbors, even while we try to manage that interface so it's all good!
6/11/2010	Anonymous	i think that unless the meeting house/white house is on the verge of being completely dysfunctional there is absolutely no need to move anywhere.
6/11/2010	Anonymous	These options do not allow me to say I am very willing to move!
6/11/2010	Anonymous	Cost seems a big factor in moving to FCS--if people feel comfortable
6/13/2010	Anonymous	I am strongly attached to our current location and do not want to move.
6/14/2010	Anonymous	It would be worthwhile to consider a location that is more accessible to public transportation.
6/14/2010	Anonymous	I feel an emotional connection to the space and would hate to lose it, but I would be willing to move if there was a strong feeling among Friends to do so. Ideally, I would like to improve the present facilities AND see a new preparative Meeting started somewhere else.
6/14/2010	Anonymous	I don't think this is a good idea as I feel it would divide the community. I like the current location and diverse group of friends that attend Adelphi.
6/16/2010	Anonymous	I have a hard time imagining that the cost of any move would be worth the expense, but I'm keeping an open mind.
6/17/2010	Anonymous	I love our Meeting House and the grounds - I love the trees. I love the Memorial Garden, I love the White House and I LOVE the Sanctuary. I would HATE to move. CLEAR ENOUGH???
6/19/2010	Anonymous	I think the current Meeting grounds and facilities are comfortably funky and appropriately modest. I would gladly see improvements in the functionality, safety, accessibility, and usefulness of the facilities, but that all seems possible with the current facilities at their current location.
6/20/2010	Anonymous	While I do have an affinity for our current location, it may well prove inadequate to be able to support what we want to accomplish over the next 30 years.
6/20/2010	Anonymous	I am opposed to new building. There are plenty of buildings in this and the wider area. Renovation is a better option for land use. Moving to an existing facility elsewhere poarhaps, but no new building or bigger footprint for this meeting.
6/20/2010	Anonymous	I am emotional attached to our current property.

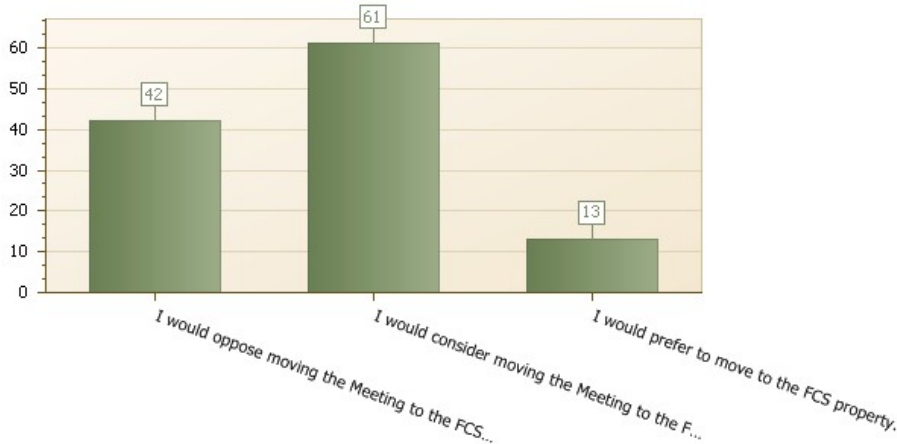
3.1.2. P5Q2 – FCS

Moving to the Friends Community School (FCS) property.

Question type: Multiple choice

Number of responses: 119

Number of respondents: 119



Answer	Count	Percent answer	Percent respondent
I would oppose moving the Meeting to the FCS property under any circumstances.	42	36.2%	32.1%
I would consider moving the Meeting to the FCS property, and support evaluating the pros and cons.	61	52.6%	46.6%
I would prefer to move to the FCS property.	13	11.2%	9.9%

Comments

Date	Respondent	Answer
------	------------	--------

6/6/2010	Anonymous	I liked our meeting at FCS, but I am concerned about how it would affect the character of our meeting. I frankly don't know. I do like the economy of sharing space.
6/6/2010	Anonymous	If the Meeting moves to the FCS property, I would have to look for a different meeting – it would 15 miles each way, much further from where I live than Sandy Spring or Florida Avenue. I don't want to go to another meeting.
6/6/2010	Anonymous	My impression is that the FCS location is not very central wrt where most of us live, but I could be wrong.
6/6/2010	Anonymous	If we go to FCS would still like a pavilion or outdoor option for worship.
6/6/2010	Anonymous	Unlike Catholics, Quakers do not give any substantial financial support to their schools. As a result, the schools have no real connection to the Quaker community and no obligations to its members. FCS and other "Quaker" schools are just a fancy private school for those who are uncomfortable with PG county public schools (just ask most non-quakers what a "friend's school" is. You'll see most do not realize there is any religious affiliation at all). I do not see we should be connected with it in such a deep way (I do not mind the present level of commitment).
6/6/2010	Anonymous	Too many negative feelings which will likely not be resolved.
6/6/2010	Anonymous	Peter Curtis has spoken persuasively to the Ministry and Worship committee about the economic benefits of moving to FCS. I think also that we do an inadequate job of assisting the school to maintain and grow its spiritual vitality, and that sharing property would facilitate that.
6/6/2010	Anonymous	I'd like to start a new meeting at FCS. A small meeting could use the FCS building, so new construction could be postponed. It would also be fine to move the entire meeting to FCS.
6/6/2010	Anonymous	I don't have an opinion.
6/6/2010	Anonymous	I am tremendously grateful that both of my children were able to attend FCS, and see their elementary experiences as fundamental in shaping their centered older selves. However, I am painfully aware that there are numerous families within Meeting and outside of Meeting who have been hurt by their children's exclusion from FCS, or the inability of FCS to meet their kids' needs when students there. Despite my experience of FCS as a wonderful place for my kids, I continue to see the school as exclusive and therefore unfortunately divisive within our Meeting community. If it were not for my expectation that moving to the FCS property would alienate a subset of our Meeting community, I would advocate using the FCS building and/or building a Meetinghouse on that property, should we decide that would meet our general needs. But I am deeply concerned that such a decision would fracture our community, at least at the present time. I do not want us to move there unless we can (eventually) do so in consensus, so that we can remain whole as a religious community.
6/6/2010	Anonymous	I think we should look at moving to the FCS site and build a new meeting house there
6/6/2010	Anonymous	Our relationship to the school is already so strained I would hesitate to get more entangled.
6/6/2010	Anonymous	If such a move would bind financial welfare of the meeting to that of the school I would be unalterably opposed. Neither should be in danger of financial hardship if the other were to need to be laid down. I do realize how important the school is to many in meeting but it operates beyond meetings direct control and should not be able to jeopardize the meetings existence under any circumstances.
6/6/2010	Anonymous	The school is its own entity and would be best let to it's own devices. There is history that would seem to make this decision insensitive. There are more than a few families that have had less than positive experiences at the school and would not feel comfortable collapsing the two.
6/7/2010	Anonymous	The choices above are too black and white. Given the longstanding hurts and conflicts existing, a move to FCS should only be considered if and when those are resolved. The meeting moved to a separate corporation when the school's budget grew to 10 times the Meeting's budget. Unless there is very clear ownership delineation, the possible future complications may be greater than we can anticipate or deal with.
6/7/2010	Anonymous	I think this would be harder on the Meeting and the school than anyone is really considering right now.
6/7/2010	Anonymous	There are compelling reasons to move to FCS, but, again, I need to yield to how our community comes to its decisions.
6/8/2010	Anonymous	I am very unlikely to attend Adelphi Meeting if it moves to FCS – however, I wouldn't oppose the meeting moving there.
6/8/2010	Anonymous	There are a lot of deer ticks at the FCS property, which should be seriously considered. There are parents who won't keep bringing their children if the deer ticks keep getting on us.
6/8/2010	Anonymous	Moving seems to make more sense for the long term, especially since so much work needs to be done to upgrade/remodel the present location... I think it would be more cost effective to build a new, "green" meeting house. I also really like the idea of the new meeting house sharing space with FCS... it just seems like the right thing to do.
6/8/2010	Anonymous	Large parts of the Greenbelt community were unhappy with the FCS purchase when they thought a city/county/state partnership had formed. While FCS is now regarded (I think) as a good neighbor, there should be outreach to the greater Greenbelt community to determine their acceptance.
6/9/2010	Anonymous	Seems like an option is missing here—I'm not opposed but prefer not to move. I am willing to entertain the possibility if it makes good sense compared to other options though.
6/11/2010	Anonymous	there are many people who would stop coming to meeting if we were to move the meeting house to fcs and what would we do during the time it was being moved? speaking as a yf and an fcs alumni i know that, 1. if i had to have class in an fcs classroom or 2. if i had to go to meeting somewhere else due to consruction, it would entirely ruin my yf experiece.
6/11/2010	Anonymous	It would be OK if it was best for the Meeting.
6/11/2010	Anonymous	Save lots of money; give the school a Meeting room; have a built in pool of new people
6/12/2010	Anonymous	A bit far for those of us coming from the Silver Spring area and further west
6/13/2010	Anonymous	This depends of course on the FCS community welcoming us, and on resolving some financial method that enables far more Adelphi children to afford attending FCS.
6/13/2010	Anonymous	There are too many Friends who oppose moving to the school site, and moving in general, to pursue this option seriously.
6/14/2010	Anonymous	I would consider looking at the pros and cons of such a move but am inclined to believe such a move could be detrimental to the Meeting community and divide it.
6/15/2010	Anonymous	Those who want, can start another meeting at FCS.
6/16/2010	Anonymous	I believe that if a large enough faction of the meeting really wants to move to FCS, perhaps we should start an FCS preperative meeting.

6/16/2010	Anonymous	I think this option would entail building a new Meeting House rather than using the FCS building. That seems prohibitively expensive but does offer the opportunity of building a truly energy efficient structure that also matches the Meeting's needs more precisely. That location would be considerably farther from my home but I don't think it would be enough to keep me away or consider attending a different Meeting.
6/17/2010	Anonymous	I think it is fair to consider the pros and cons even though I would rather stay separate from the school unless we had our own building on the property.
6/17/2010	Anonymous	i'm somewhere between the first two options. i hesitate to say "under *any* circumstances," and i'm willing to support a discussion, but i *really* don't want to move.
6/18/2010	Anonymous	I would not want to worship at FCS - I see it as an institution that excludes many of the "disadvantage" and "disenfranchised" that Jesus teaches us are "of the Kingdom of Heaven".
6/19/2010	Anonymous	my concern about moving to FCS is that the meeting has (in my opinion) never fully committed to the school. i personally love it dearly and wish that the meeting as a whole embraced it. while moving to the school property could bring the two communities closer together, it could just as likely make the friction greater. forgive me, friends, if i think it is presumptuous for the meeting to take advantage of the incredibly hard work that school did, quite independent of the meeting community (and actively opposed by some members), to acquire the land on which it is located. i would favor splitting the meeting and beginning a preparative meeting at the school (in the school building)
6/19/2010	Anonymous	Please see comments at 1. Also, what if climate change makes the region wetter? Do we wish to build a new Meeting house in a low-lying wetlands, when currently we are on high ground?
6/20/2010	Anonymous	We must evaluate the pros & cons
6/20/2010	Anonymous	The FCS property is adjacent to a park. No further building in this area please. Let's walk lightly on the earth.
6/20/2010	Anonymous	I know this option has many advantages but it is far from the Silver Spring gang
6/20/2010	Anonymous	Location is too far for convenience.
6/20/2010	Anonymous	I would no longer attend Adelphi Friends Meeting if it were located on FCS property. I have sought to heal wounds from FCS by maintaining close involvement with AFM. I am clear that I could not maintain or continue this process if we were permanently on FCS grounds.
6/21/2010	Anonymous	"I would oppose" seems strong, but I would rather not.
6/29/2010	Anonymous	It would be good for both the school and meeting to have a closer relationship. I think it would be more economical, and a new facility would meet all of the identified needs on the previous pages of this survey.

4. Size

4.1.

Response counts for survey 'Adelphi Building Our Future: Confidential Survey'

	Before filtering	After filtering
Partial responses (unique respondents)	24 (24)	24 (24)
Completed responses (unique respondents)	107 (107)	107 (107)

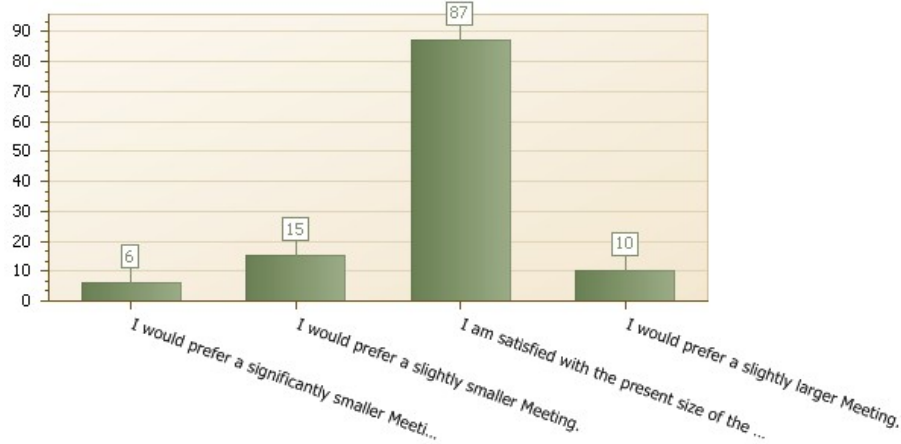
4.1.1. P6Q1 – Size

Size of the Meeting.

Question type: Multiple choice

Number of responses: 120

Number of respondents: 120



Answer	Count	Percent answer	Percent respondent
I would prefer a significantly smaller Meeting.	6	5.1%	4.6%
I would prefer a slightly smaller Meeting.	15	12.7%	11.5%
I am satisfied with the present size of the Meeting.	87	73.7%	66.4%
I would prefer a slightly larger Meeting.	10	8.5%	7.6%

Comments

Date	Respondent	Answer
6/2/2010	Anonymous	I would be comfortable with the Meeting growing some, though I wouldn't say "I prefer a slightly larger Meeting."
6/6/2010	Anonymous	this is referring to the meeting HOUSE, not the Meeting. individuals and attenders comprise the Meeting.
6/6/2010	Anonymous	I have never seen anyone leave because they couldn't find a seat. A cosy full meeting has a certain positive atmosphere that a somewhat less full room would lose.
6/6/2010	Anonymous	Bigger problem is there is a leadership gap in the 35-50 year old age group.
6/6/2010	Anonymous	Our meeting is larger than the other two meetings I have visited (in Tennessee and in Philadelphia) and seemed much healthier and more vital. While I believe in growth such as Takoma Park Preparative is attempting, which could be done somewhere like Greenbelt as well, I think the impetus should come from a smaller group that wants to form a new nucleus closer to their homes rather than deliberately splitting our meeting to fit with scientific statistics about community size. That feels unnatural.
6/6/2010	Anonymous	Perhaps the Takoma Park Friends could merge with Adelphi, as many moved over to Greenbelt?
6/6/2010	Anonymous	As long as we can accommodate the physical needs of attenders of Meeting, I enjoy it on the occasions that there is not a seat left and the younger folk have to pull up their "seats" on the carpet. I experience it as a sign of our vitality and centeredness in the Spirit - otherwise, why would so many people want to be a part of this community.
6/6/2010	Anonymous	The size of Meeting is not super important to me but it should be large enough to offer a good first day school program.
6/7/2010	Anonymous	If the Meeting gets too large we risk having popcorn Meetings for Worship. On the other hand, I recognize the need for our community to grow, especially through families with children.
6/7/2010	Anonymous	Growth may occur if we undertake a major campaign. I support that but would prefer that the meeting room remain the same size.
6/7/2010	Anonymous	But I see Meetings half our size more focused and successful in their endeavours. In short, I can't make a reasoned response to these questions.

6/7/2010	Anonymous	A slightly larger Meeting would probably be okay.
6/8/2010	Anonymous	I am satisfied with the present size but would like facilities that allowed the Meeting to grow – if that's where the Spirit lead us. I think we should always be seen as an open community. I've actually heard people suggest that we shouldn't reach out to people because our meeting couldn't handle more. That concerns me deeply.
6/8/2010	Anonymous	If our Meeting is big enough, I hope we and I can find more time to help the Takoma Park meeting grow. I place a high priority on there being "space" somewhere for new Friends to join. A lot of new people are visiting our Meeting, so it is important to not be at a "full" situation year after year. Finally, there are now a sizable number of more-programmed Friends in Latin America. What if a Quaker pastor from Latin America wants to build a community in our part of Maryland? Can we offer space? I think we should plan to be able to do that, and consider the impact of our location (and Takoma Park Preparatory's status) on that opportunity.
6/8/2010	Anonymous	I think the meeting size should be maintained or grow wlightly. A smaller meeting won't need any fewer volunteers, (unless the RE program loses critical mass, which would itself create a smaller meeting) and the current size seems to find enough volunteers without too much difficulty
6/9/2010	Anonymous	As long as we aren't driving newcomers away.
6/11/2010	Anonymous	i think that i have already made my viewpoint clear on this topic.
6/11/2010	Anonymous	And how will you accomplish this? Firing squad? lol Hey, bigger building = smaller Meeting.
6/11/2010	Anonymous	Hate to loose any of the kids-- but feel am beginning to not even recognize people much less know them.
6/14/2010	Anonymous	It seems that as Meeting has grown, it has become harder to fill committees and other positions. Maybe with a larger Meeting, people feel less ownership and responsibility.
6/14/2010	Anonymous	The Meeting seems to be a good size where people can get to know one another and give support as we journey together.
6/15/2010	Anonymous	This means we can support a good first day school.If we were smaller the whole character of the meeting would change because fewer families with children would attend.
6/16/2010	Anonymous	I would not mind a larger meeting (in terms of community size) but I don't know how much bigger our community can become without fracturing.
6/16/2010	Anonymous	I've experienced large and very small Meetings. This one strikes me as just about the right size. The facilities probably can't support a significantly larger Meeting.
6/17/2010	Anonymous	If it gets slightly larger, I would be OK with that.
6/17/2010	Anonymous	I have no opinion one way or the other
6/18/2010	Anonymous	I cannot honestly choose just one of these four options because I am comfortable with most of them. My only concern would be to avoid ending up with a significantly smaller Meeting. Having recently sat in worship with Lansdowne Friends (Philly area), which has seen a major loss of members/attenders over the years, I am aware of the difficulties of sustaining a Meeting, both spiritually and financially, with just a handful of participants. (They used to be a Meeting of at least our current size, if not larger, and on my recent visit only ten people were in Meeting for Worship.)
6/19/2010	Anonymous	I have attended a much smaller Adelphi Meeting (in years past) and I've attended larger meetings elsewhere in BYM – and I think Adelphi is the right size meeting (if not the right size building).
6/20/2010	Anonymous	Same or larger
6/20/2010	Anonymous	This is an ever present question which always results in the same answer: Keep th present size.

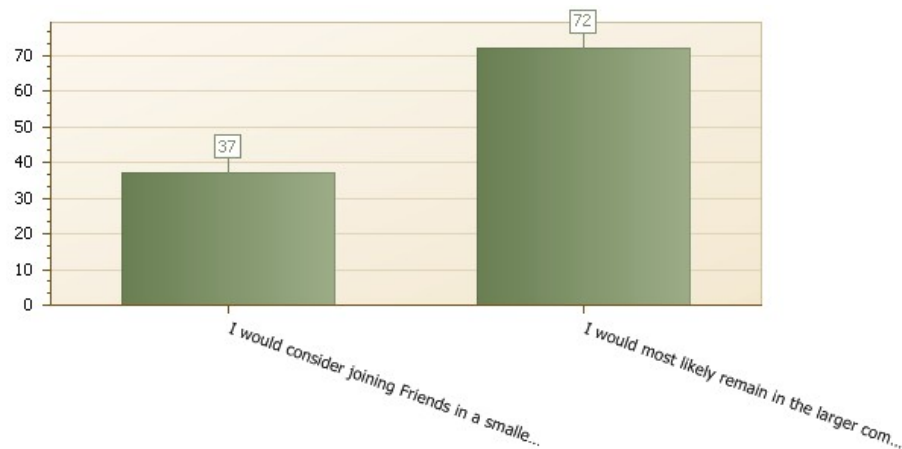
4.1.2. P6Q2

Splitting the Meeting. If the commute to a new location as well as meeting facilities issues were to your satisfaction, which statement best expresses your feelings on splitting from the present meeting?

Question type: Multiple choice

Number of responses: 117

Number of respondents: 117



Answer	Count	Percent answer	Percent respondent
I would consider joining Friends in a smaller meeting.	37	33.9%	28.2%

I would most likely remain in the larger community.	72	66.1%	55.0%
---	----	-------	-------

Comments

Date	Respondent	Answer
6/6/2010	Anonymous	I think we already have a smaller meeting: Takoma Park.
6/6/2010	Anonymous	I spent several years at Takoma Park Friends Meeting, which theoretically is under the care of Adelphi but which in actuality received very little support or care from Adelphi that I could see. I don't want to have to start from scratch with another small meeting that has to struggle for meeting space, struggle for funding, struggle to have enough experienced Friends to do the work of the Meeting. I don't want to break my heart over a meeting like that again.
6/6/2010	Anonymous	I would remain at Adelphi. I would not go to a new location.
6/6/2010	Anonymous	Only consider moving to a smaller meeting if Adelphi helped it to succeed and not flounder like the Takoma Park Meeting.
6/6/2010	Anonymous	I am especially interested in a large number of attending children.
6/6/2010	Anonymous	Learn from Takoma.
6/6/2010	Anonymous	If, and this is a mighty big if, if I could walk to Meeting I would consider becoming part of a smaller meeting. Years ago we considered the possibility of scattered Meetings but only Takoma Park stuck it out, and we never worked very hard on developing a 'federal' MM structure, wherein we might worship in scattered forums, but keep our business as one. Unless Friends are willing to commit to a radical structural change such as this, I do not think splitting is a solution.
6/6/2010	Anonymous	I am emotionally attached to so many members of Meeting. When Takoma Park Preparative Meeting split off years ago, I actively missed many people who no longer frequently attended Meeting at Adelphi. Although I understand that at some point we may grow so large that we must break into smaller Meetings, for me that breaking point has not yet been reached. When that day does come, though I understand that it will truly be necessary to nurture the smaller new preparative Meetings, I know myself well enough to expect that I will have a difficult time giving up worshipping in my larger community.
6/6/2010	Anonymous	If we had the money, I'd favor keeping Adelphi where it does, helping Takoma Preparative get a meeting house, and starting another preparative meeting at the FCS site.
6/6/2010	Anonymous	not sure
6/6/2010	Anonymous	I could go either way as long as the first day school needs of children are met.
6/7/2010	Anonymous	The present community has its own work to do to build a stronger, more caring faith community. Size is not so much the issue as how we deal with each other.
6/7/2010	Anonymous	I think this depends on where the two meetings would be located and also who would be moving to the smaller meeting.
6/7/2010	Anonymous	I am not opposed to hiving off another Preparative Meeting, though.
6/7/2010	Anonymous	I am not able to respond. I am torn between opposite views.
6/8/2010	Anonymous	This completely depends on the circumstances, location, etc.
6/11/2010	Anonymous	i don't understand this question and did not fill in a bubble because i do not want to express something that i do not think.
6/12/2010	Anonymous	Depends -- on the location of the new meeting, the size, and then also on who would join which meeting.
6/14/2010	Anonymous	The First Day School program is important to me and splitting the meeting would really affect the quality of this program, in my opinion.
6/14/2010	Anonymous	A new Meeting would need to have a significant number of children, and programs for them, to be attractive to our family.
6/14/2010	Anonymous	I would not like to split the Meeting and or commute to another location.
6/16/2010	Anonymous	If there were an equally strong YF presence and it were not at FCS, I would consider joining a smaller meeting.
6/16/2010	Anonymous	If I want a much smaller Meeting then I would just attend the Takoma Park Preparative Meeting.
6/17/2010	Anonymous	I don't like the idea of splitting; who would be lost?
6/17/2010	Anonymous	i have a commitment to staying with the high school young friends--wherever there are the most of them, that's where i see myself
6/18/2010	Anonymous	I find I cannot choose. I could see myself going either way.
6/18/2010	Anonymous	I don't really know what I would do. I don't think that that is something I could decide in the abstract.
6/19/2010	Anonymous	as i said, i would prefer forming a smaller, separate meeting at FCS.
6/20/2010	Anonymous	I think there is already (or was) at least one split from the meeting and also there is Takoma, so unsure why another split is helpful.
6/20/2010	Anonymous	I prefer for us to stay where we are -- strongly. But, if the community went to Greenbelt, I probably would too.

5. Biggest Concerns

5.1.

Response counts for survey 'Adelphi Building Our Future: Confidential Survey'

	Before filtering	After filtering
Partial responses (unique respondents)	24 (24)	24 (24)
Completed responses (unique respondents)	107 (107)	107 (107)

5.1.1. PTQ1 – Greatest Concerns

What is your biggest concern, reservation, or hesitation about proposed changes to our facilities?

Question type: Open ended

Number of responses: 100

Number of respondents: 100

Date	Respondent	Answer
6/2/2010	Anonymous	Finding a sense of the meeting to commit to the expense.
6/6/2010	Anonymous	I like our meeting. I like economy. People are more important than facilities.
6/6/2010	Anonymous	1. \$\$\$ 2. \$\$\$ 3. \$\$\$ 4. \$\$\$ in times of financial uncertainty, the investment climate, political and environmental uncertainty, it seems very risky to contemplate taking on debt to achieve a marginal benefit in terms of aesthetics or seating capacity.
6/6/2010	Anonymous	I am concerned about the possibility of moving away from the present site. Among other things, this is where the memorial garden is. If the Meeting sells this site, what happens to the people who are memorialized there? Are they to be moved? This isn't my biggest concern, but it's part of it – how is the Meeting to keep faith with those who are memorialized there? The biggest concern is the possibility of moving to Friends Community School. Takoma Park Friends Meeting met there for a few months some years ago, and it was 15 miles each way – a very long haul in the winter from Wheaton. Although I am not as comfortable at other local Friends meetings as I am at Adelphi, and I am a member of Adelphi, I would strongly feel that I should have to move to a different meeting closer to home – Bethesda, Florida Avenue or Sandy Spring.
6/6/2010	Anonymous	I am concerned about what I perceive as a bandwagon effect. We haven't heard much from those who don't buy into the need for improved facilities.
6/6/2010	Anonymous	The financial impact on many of our members. Losing members (as Langley Hill did) would not be worth many of the more "aesthetic" changes. In addition to the The usual cost overruns that would occur. I am concerned about the rifts among our members that can occur over such a major project. I participated in building a very large community center in Anne Arundel County. There were rifts that nearly destroyed the community leadership.
6/6/2010	Anonymous	Money. I am also concerned that we may get into a big fight.
6/6/2010	Anonymous	The ability of the Meeting to undertake financial obligations for construction/renovation and/or moving during recessionary times, when personal finances of Meeting members/attenders are already stressed.
6/6/2010	Anonymous	Let's not spend money on cosmetics and conventionalities. When faced with inconveniences (e.g. records storage) let's first consider modifying our behavior (e.g. keeping only essential records) before spending on new facilities.
6/6/2010	Anonymous	I value the atmosphere and sense of community and am apprehensive about chge
6/6/2010	Anonymous	I believe that the cost and effort in attempting to upgrade the present facility would be better spent on a completely new location and/or structures
6/6/2010	Anonymous	the project could take on life of its own without regard to the budget.
6/6/2010	Anonymous	1. People feeling that if they don't have a lot of money to spend on any new facilities that they will feel they have to leave Meeting or will be hostile to the idea of anything new. 2. Sticker shock and a fear that we are biting off more than we can chew, financially. 3. People will find it difficult to hold a vision of what is possible and trust that the money can be raised. 4. People feel it is immoral to spend money on facilities and think money should go to programs/projects.
6/6/2010	Anonymous	that we move to the FCS grounds
6/6/2010	Anonymous	The disruption, the potential of having to meet in temporary digs for a period, does not appeal to me. The money is obviously a big issue and stress, especially since I have already heard some of the values that I feel to be most crucial, like greening the meetinghouse, be dismissed as too costly. I feel if we are going to make a change we almost HAVE to go greener, because our planet is in dire peril.
6/6/2010	Anonymous	I don't understand why the size of the meeting has come under the purview of the facilities committee. I thought that committee had decided to roughly maintain facilities for the current size of the meeting. I strongly feel that the current size of the meeting is fine we should stick to that concept.
6/6/2010	Anonymous	That it moves further away from Takoma Park.
6/6/2010	Anonymous	It seems like a piece-meal discussion disconnected from the earlier LRP discussion. I don't often hear the words "mission" or "calling."
6/6/2010	Anonymous	Our focus has been on building enlargement or modifications not on energy sustainability. Certainly we need a new heating/cooling system but have heard no comments on solar/geothermal options. We are proposing to spend tons of \$ on a facility minimally occupied. Could we share the building/expenses with another group that meets at another time: religious congregation, music/concert series, Buddhist groups, yoga/tai chi or other classes.?
6/6/2010	Anonymous	I would like to pay as we go as possible.

6/6/2010	Anonymous	That we are not practice enough in Quaker process to reach unity without rifts or harm to the community.
6/6/2010	Anonymous	The room size fits well currently with the number of participants creating a homey close atmosphere. Changing to an unknown place or size worries me.
6/6/2010	Anonymous	I don't know where the money will come from, and don't feel compelled to make a sacrificial gift for capital improvements, although I realize that the current situation is untenable.
6/6/2010	Anonymous	My biggest concern is that Friends are reluctant to spend money on facilities for themselves.
6/6/2010	Anonymous	Cost of proposed changes would be beyond our ability to fund, and could in fact detract from traditional Quaker values that we want to represent.
6/6/2010	Anonymous	Apart from the acoustics, I am happy with the present location and facilities.
6/6/2010	Anonymous	That the place no longer be in keeping with Friends tradition of simplicity and "plainness".
6/6/2010	Anonymous	Healthy meetings grow, and will from time to time either grow their facilities to keep up (or lead) the human growth, bud off new Meetings, or wither and die. To me it is healthy to occasionally have this discussion, but not healthy to put off decision-making. I am excited by the process we have used this time and encourage the Meeting to complete its gut check and move on.
6/6/2010	Anonymous	My biggest concern is that we do not go chasing after dragons in ways that are unnecessary. I don't want to see our community unduly stressed by the need to raise huge sums of money. I don't want a FANCY new Meetinghouse, or a FANCY new place for First Day School. However we manage to solve our current difficulties, I want our place of worship to be as simple, plain, and economical (though of course more functional and well-stewarded) as our current buildings.
6/6/2010	Anonymous	I like Adelphi where and how it is -- though I recognize that the building is prematurely worn.
6/6/2010	Anonymous	estrangement of others because of conflicts around this process
6/6/2010	Anonymous	I think we should look at moving to the FCS site and build a new meeting house there.
6/6/2010	Anonymous	worried about money and the overall focus of our group becoming material and self-directed instead of spiritual and outwardly directed.
6/6/2010	Anonymous	Wedding the future of meeting to that of the Friends Community School would be a big negative for me. I wouldn't quit meeting over it but I would feel no obligation to step up if the schools finances got meeting in trouble.
6/7/2010	Anonymous	Cost.
6/7/2010	Anonymous	Loss of Friends historical presence in Adelphi.
6/7/2010	Anonymous	That the focus on facilities will occupy our time and other concerns will be put on the baqck burner.
6/7/2010	Anonymous	If we are to stay in the present facilities, I have concerns about maintenance -- always a very slow process. We should renovate/build to be a maintenance free or simple as possible.
6/7/2010	Anonymous	I love the space where Meeting is, primarily because it has been there my whole life and I don't want that to change.
6/7/2010	Anonymous	That our community finds a way to achieve what is achievable in harmony, with all who are willing to partacape believing that their voices have been heard and respectfully considered.
6/7/2010	Anonymous	I love our community as it is, intact, and would be deeply saddened to lose relationships if a group were to split off to form a Greenbelt or other meeting. I hope we can find a solution that keeps the meeting together.
6/7/2010	Anonymous	conflict in the meeting
6/7/2010	Anonymous	It has revealed some deep, and significant divisions within our community over other issues, such as Friends Community School. These divisions and conflicts have been festering and need to be resolved.
6/7/2010	Anonymous	We need to think carefully about what kinds of changes we are making. Are they consistent with the Friends testimonies? How can we have an attractive, workable environment that is in synch with simplicity?
6/8/2010	Anonymous	My biggest concern is that the some members will feel alienated from the Meeting. We seem to be able to raise healthy conflict, but we seem very slow in responding to it and turning the conflict into strengths. I would like to see a special clearness committee that is formed to respond to confrontational situations and hold everyone -- even the most marginal or disagreeable or perhaps silent (and potentially dismissed) participants in our community -- in the Light.
6/8/2010	Anonymous	If the Meeting space moves eastward, we need to make the building of Takoma Park Meeting a major project. This is a good idea no matter what we do, but becomes more imperative if we move.
6/8/2010	Anonymous	I fear the cost will be prohibitive, causing paralysis in the decision making... I also worry that in an effort to save money, difficult choices will have to be made making the changes less eco-friendly/sustainable.
6/8/2010	Anonymous	I really do not want to move to Friends Community School - or any place where Adelphi Monthly Meeting is a side project, or extra event. I like that we are our own entity, the availability of the meetinghouse and the peacefulness of it. I think moving somewhere that is already "someone else's home" would feel foreign and strange. I think that if the Young Friends program were to be held in the elementary school's classroom we would not have a comfortable place of our own. I am most worried about the meeting not feeling like home.
6/8/2010	Anonymous	I favor renovation, of current facilities or another building, rather than starting fresh. Renovating is in line with stewardship
6/9/2010	Anonymous	I'm concerned that moving forward will be divisive and that Friends might become polarized on choices rather than working together in a Spirit-led way.
6/9/2010	Anonymous	That we will continue to be penny shy and pound foolish and not move ahead with doing something beyond our current band-aid fix and deferred maintenance and improvements approach.
6/10/2010	Anonymous	Our facilities look like we are depressed. Too depressed to be respectful of guests - or ourselves.
6/10/2010	Anonymous	The cost of any up-grades.
6/11/2010	Anonymous	cost.

6/11/2010	Anonymous	i don't want to move to fcs or do any major construction.
6/11/2010	Anonymous	My chief concern is that members/attenders of Meeting will be so reluctant to build, move, stretch, find resources, etc., that nothing will happen. That would be a real shame. The planning process has shown it can be done and we need to trust that.
6/11/2010	Anonymous	The bottom line: Energy efficiency will save on energy bills. Having a multi-use room available during the week will bring in revenue from renting it. We can only go forward, not back, and staying in the same place is not a good option.
6/11/2010	Anonymous	We wont have a big enough vision of what we could have.
6/11/2010	Anonymous	that it will move to a farther location
6/12/2010	Anonymous	damaging our special community
6/12/2010	Anonymous	1) Expense, and the real possibilities of raising the funds 2) Relocation to an area that is more difficult to commute to
6/12/2010	Anonymous	I don't want to lose the community of the meeting
6/12/2010	Anonymous	disruption during construction
6/12/2010	Anonymous	difficulty of raising sufficient funds, and indebtedness I also worry about losing the charm of the current building - I like the "genteel shabbiness" and would hate to have a new building that lacks personality.
6/13/2010	Anonymous	My biggest concern is that the perfect will get in the way of the better; that opening everyone's minds to all the possibilities will close their minds to solving the most important problems we face; that it will take this meeting's focus away from from our dual purpose of worship and service and towards the purpose of surrounding ourselves with "good" things. They may be good (read green, sustainable, etc) but they are not necessary
6/13/2010	Anonymous	That we cannot afford it
6/13/2010	Anonymous	My greatest concern is that controversy over changes to our facilities, and the money it will all cost, will undermine our community spirit and weaken the Meeting.
6/14/2010	Anonymous	taking on a huge amount of debt
6/14/2010	Anonymous	That we are too fearful to insist on -- and figure out ways to accomplish -- everything we need.
6/14/2010	Anonymous	Changes will be difficult and not everyone will be satisfied, no matter what the outcome. It would be sad if the process of improving our facilities led to hard feelings and alienated people.
6/14/2010	Anonymous	Moving. I love the Meeting Room; its feel, its look, the view, and the continued presence of those who have passed. Such a space can ever be fully duplicated. Moving to another location would eventually establish its own sense of "covered" space. However, I would like to stay with this one.
6/14/2010	Anonymous	I suppose the cost is. But a lot can be done if there is the will to make improvements. Perhaps we can continue to upgrade and maintain the property in the ways we are currently doing while deciding whether or not to rebuild on the current site. It seems, and I know this has been talked about, that a thorough evaluation of our property as to its age and the status of the current buildings would help us towards deciding how best to spend our money for the long term. Staying and just fixing the current buildings as we are doing may be throwing money away in a sense if the buildings aren't worthy of saving and due their age and deteriorated status.
6/15/2010	Anonymous	I like the Adelphi Meetinghouse grounds and do not want to drive to Friends Community School, which feels isolated, distant, and well, institutional, like a school.
6/15/2010	Anonymous	That we will delay making a decision for years and that we will let opposition to change prevent us from moving forward on a renovation of some kind.
6/15/2010	Anonymous	I am really attached to the current grounds and community, and it would make me very sad if it was no longer a mostly constant thing.
6/16/2010	Anonymous	I love our meeting house!! Also, to build a new meeting when we have a functional (if imperfect) one is wasteful, expensive, and unsustainable. We should work with what we have and spend our time and energy helping communities without functional facilities/resources.
6/16/2010	Anonymous	Since we are not even adequately supporting the current Meeting budget, I am very hesitant to take on a large, expensive project that does not strike me as absolutely necessary. I am also very concerned with right use of resources. I think there are probably other concerns that merit higher priority but I admit that I haven't adequately heard what others in the Meeting have to say about it.
6/17/2010	Anonymous	That some of the changes may be unnecessary and a waste of money that we do not have.
6/17/2010	Anonymous	Usefulness of space, i.e. make facility highly functional, do not waste space.
6/17/2010	Anonymous	cost
6/17/2010	Anonymous	money. we barely make our budget now! how can we possibly afford capital improvements?
6/17/2010	Anonymous	I would very much like to see the meeting give priority to environmental sustainability in the light of what I view as a crisis in terms of climate change, species extinction, peak oil and economic structural problems. This is my first priority for my spiritual community. It does not seem to be a major concern at Adelphi, nor does there seem to be much concern with cruelty to animals in fossile fuel intensive factory farming and eating patterns--- and this is a source of sadness for me so I have drifted away from Adelphi meeting finding other communities that share my calling to work on these issues and express them in my spiritual life.
6/17/2010	Anonymous	That the meeting could become too focused on fundraising at the expense of other priorities.
6/17/2010	Anonymous	None - Whatever majority decides is fine with me
6/18/2010	Anonymous	Whether I should be filling out this survey since I have moved out of state and no longer attend Adelphi Meeting. It does seem to me that it is the people who make it a welcoming meeting more than the facility.
6/18/2010	Anonymous	That strong opinions in favor of moving to FCS will prevail.
6/18/2010	Anonymous	Well, change is always hard at first. If we end up moving away from our current propety, it will feel a bit like leaving a beloved home. But that's not a "big" concern, per se. Because that's part of the nature of growth and renewal.

6/18/2010	Anonymous	I think that our facilities are the ones that I have found to be a home for me. Our buildings are old, and look lived in, and that seems more welcoming to me than anything shiny and new.
6/19/2010	Anonymous	I am opposed to our Meeting taking on large amounts of debt considering the financial state of our country.
6/19/2010	Anonymous	the financial and time commitment to get it done. this is likely to be placed on the shoulders of a few dedicated members who could burn out. this is off set by the fact that the problems related to the limitations of the present building are presently placed on the shoulders of a few dedicated members who are close to burning out.
6/19/2010	Anonymous	Given the state of the economy, raising enough money to move or greatly enhance the Meeting facilities seems highly risky. Taking on that risk when the Meeting facilities as they are could be improved at an appropriately (to Quaker values) modest level seems unwise.
6/19/2010	Anonymous	The cost, but I know that smaller Meetings than our have managed to renovate, and raised the money to do so.
6/20/2010	Anonymous	My biggest concern is that the meeting will be unable to come to consensus on any significant changes that are to our longterm benefit. Staying with the status quo because change is difficult is NOT a longterm vision.
6/20/2010	Anonymous	Changes must be connected to passions, to "go forth" with individual calls. Many calls sre supported by some kinds of change. "Change" is only needed when it helps support "call."
6/20/2010	Anonymous	I have two concerns: 1) I think there are many, many religious buikldings in the wider area and more is not a good use of land. I favor keeping the meeting footprint small. The existing building should be repurposed or renovated. The cost of removing is likely expensive (tp physically remove existing buildings from land) so we already have a pretty big footprint; 2) I am concerned that a building program would focus the meeting on its own "consumption" issues rather than the meeting's rerason for being in the community and world.
6/20/2010	Anonymous	Environmental. Prefer to improve what we have.
6/20/2010	Anonymous	The clear need to replace both facilities may be unaffordable. The focus is too weighted on concerns for others and slights concerns for our community meeting and the dignity of the society.
6/20/2010	Anonymous	Our Meeting is too large.
6/21/2010	Anonymous	I feel rally strongly that we can always find money to spend on ourselves, but that we are not making the same investment in the community around us. Where are the Quaker drug rehab centers? I am not looking forward to the probably bickering we will do. I would really like to end up composted in the exisiting Memorial Garden.
6/29/2010	Anonymous	the cost of the renovations would be too great, and therefore is unattainable.

6. Greatest Joys

6.1.

Response counts for survey 'Adelphi Building Our Future: Confidential Survey'

	Before filtering	After filtering
Partial responses (unique respondents)	24 (24)	24 (24)
Completed responses (unique respondents)	107 (107)	107 (107)

6.1.1. P7Q2 – Greatest Joy

What is your greatest joy, or positive feelings about proposed changes to our facilities?

Question type: Open ended

Number of responses: 97

Number of respondents: 97

Date	Respondent	Answer
6/2/2010	Anonymous	The image of a large gathering with plenty of space.
6/6/2010	Anonymous	I want everyone to feel welcome, within the bounds of reasonable cost.
6/6/2010	Anonymous	lots of joys! i loved the measure hunt. i think the committee's doing a great job. we need to listen especially to the Young Friends.
6/6/2010	Anonymous	At this point, since I was unable to attend the earlier sessions, I am not sure I have positive feelings about anything other than fixing up the bathrooms and making the place more accessible.
6/6/2010	Anonymous	None
6/6/2010	Anonymous	The excitement in planning to do some major renovations (Meeting House kitchen and bathroom) that have been needed for some time. Handicap access has been long overdo.
6/6/2010	Anonymous	We would be doing something that has needed to be done for awhile.
6/6/2010	Anonymous	Pleased at the prospect of creating a more welcoming, eco-friendly, more handicapped accessible space for Meeting activities.
6/6/2010	Anonymous	Improved basement classroom in the white house. Improved kitchen facilities to support meeting events, workcamps, etc.
6/6/2010	Anonymous	The meeting has outgrown the present facility and the buildings are constructed using outdated and jury rigged solutions and we could forge into a future with modern,eco friendly structures and siteing that would allow us to adapt to the changing needs of the meeting and it's community.
6/6/2010	Anonymous	being in nice, clean, well-kept space would be lovely.
6/6/2010	Anonymous	We could have a Meeting House that is environmentally friendly with a zero carbon foot print, assessable, and has an outdoors worship facilities. That people are talking and listening to each other about what they value. Meeting members are coming together to make great decisions in a thoughtful and inspired manner.
6/6/2010	Anonymous	that the new grounds might be healthier for our older members, especially if there were less mold.
6/6/2010	Anonymous	I like the sense of potential, the feeling that we could raze both buildings and put up geodesic domes on our property, or build a beautiful green meetinghouse at FCS.
6/6/2010	Anonymous	I'm glad that people are striving to do something positive about what some consider a crowded situation.
6/6/2010	Anonymous	Whether we move to FCS or not, the current discussion is bringing the conflicts with FCS over the years to the forefront.
6/6/2010	Anonymous	Many seem to agree a larger meeting/social hall is needed.
6/6/2010	Anonymous	It would be super to have more comfortable bathrooms and a more efficient kitchen for Strawberry Festival.
6/6/2010	Anonymous	People being open to change.
6/6/2010	Anonymous	That we can embody in our facilities many of the values and visions for our community, which will, in turn, enrich our faith community.
6/6/2010	Anonymous	It would be nice to accommodate important occasions like weddings or memorial services. We need more spaces for child activities.
6/6/2010	Anonymous	I think that accessibility to all and good spaces for children are imperative, and sustainability is near-imperative. I am also intrigued by the good that might come of bringing the AFM and FSC communities closer together.
6/6/2010	Anonymous	I'm new, so I don't know what the schism about FCS is, but there definitely is one. I hope doing something with FCS will help heal that breach.
6/6/2010	Anonymous	They could help us build a more extensive feeling of community
6/6/2010	Anonymous	That the meeting has so many members and attenders that this begins to seem needed suggests that Friends are a thriving community. That's a good thing.
6/6/2010	Anonymous	I am very impressed by the careful threshing and listening we are doing. I am hopeful that we'll slowly be able to grow into solutions that will not fracture our community in painful ways.
6/6/2010	Anonymous	I like the idea of a new aesthetically appealing meetinghouse.

6/6/2010	Anonymous	removing physical, tangible barriers so as to increase our spiritual growth and enjoyment of God's presence in our midst. This boils down to ease of use = simplicity.
6/6/2010	Anonymous	I like the meeting room best.
6/6/2010	Anonymous	I do think we need to become green and handicap accessible.
6/6/2010	Anonymous	Real accessibility, Better general safety. Complete fire sprinklers so that our tax free property does not put a burden on public Safety resources.
6/7/2010	Anonymous	The community's current desire and efforts towards creating a comfortable and functioning meeting space.
6/7/2010	Anonymous	That the Friends presence in the area is growing.
6/7/2010	Anonymous	Making the meeting's facilities more handicapped friendly and giving the children more useable spaces is a positive move.
6/7/2010	Anonymous	We'll have a more welcoming, safer, and accommodating facility.
6/7/2010	Anonymous	I like the idea of making our Meeting fully accessible and eco-friendly.
6/7/2010	Anonymous	It is time to act, and that feels just right.
6/7/2010	Anonymous	It would be a great joy if everyone felt their opinion could be aired and heard and that we could work together as a community toward an outcome that most everyone could be happy with--a simple yet attractive, functioning, eco-friendly and no longer shabby building.
6/7/2010	Anonymous	that we might have a space more conducive to peace and ease in worship and more ease in using the bathrooms and kitchen, we might have space for more functions.
6/7/2010	Anonymous	That we can ensure that a stable, attractive facility will be created to leave for future generations of Friends.
6/7/2010	Anonymous	Some physical aspects of the Meeting do seem run-down. It would be nice to have everything fresh and clean, but then the challenge is to keep it that way. I think a lot could be done by just getting new furnishings rather than by making structural changes.
6/8/2010	Anonymous	My greatest hope is that whatever happens with the facilities, we can find ways in which all members can contribute (even children) to the process so everyone feels a part of this great transformation. I want the central focus of this change to be moving our community closer together – rather than having a nicer place to meet.
6/8/2010	Anonymous	Having more space so that visitors, considering regular attendance, don't feel the Meeting is already "too full."
6/8/2010	Anonymous	I'm impressed by the care that is being given to the threshing process and encouraged that all opinions will be taken into consideration.
6/8/2010	Anonymous	I love the excitement and passion we all have about the changes to the meeting. Having at the very least a spring cleaning and patchup of our spaces could be really cleansing and beneficial to the meeting, and expanding our space to accommodate our capacity is always good.
6/9/2010	Anonymous	I believe, if our community can hold and work together through such a large change, that we will be stronger and appreciate the fruits of our labors in a beautiful and well-loved space, wherever it ends up being.
6/9/2010	Anonymous	That we are finally talking about these issues when so few have ever shared that burden in the past and that some new possibility will emerge at last to solve some age-old problems and limitations.
6/10/2010	Anonymous	It is important to maintain any building we have. The changes could broaden our service and involvement in the community.
6/11/2010	Anonymous	much needed change and sustaining a future healthy facility.
6/11/2010	Anonymous	having a meeting house with more natural light and better acoustics. in addition it might be nice for the littler kids to have a pleasanter room then the basement of the white house.
6/11/2010	Anonymous	Imagining a spiritual setting of peace and beauty. . .with lots of light. . .and natural resources. . . and enough space to interact without bumping into each other.
6/11/2010	Anonymous	I haven't been following things well enough to know what they are, but I trust the committee. One joy is that the committee is looking at it BEFORE things fall apart, the roof blows off, the building cracks, etc.
6/11/2010	Anonymous	People are taking the conservation/green/sustainability concerns more seriously now.
6/11/2010	Anonymous	I am excited in our building becoming more energy efficient (the greening of the building)
6/12/2010	Anonymous	more spiritual physical space
6/12/2010	Anonymous	1) If it will really please others in the meeting who are feeling dissatisfied with the present facilities, I would support them in this effort 2) the possibility of using the facilities for other purposes (community activities, etc.)
6/12/2010	Anonymous	I do think that the space for First Day School should be more appealing.
6/12/2010	Anonymous	Would provide a solid base for the future.
6/12/2010	Anonymous	would be great to have more space and more functionality
6/13/2010	Anonymous	This process. The people who are driving this process care for the meeting.
6/13/2010	Anonymous	A chance to stop looking shabby, to have a Meeting House that works well functionally (e.g. air conditioning in the summer, hearing assist technology).
6/13/2010	Anonymous	I look forward to worshipping in an attractive yet simple, air conditioned meeting room with wonderful acoustics.
6/14/2010	Anonymous	the feeling that we are addressing many issues that have been festering for quite some time
6/14/2010	Anonymous	I am excited by the prospect of change.
6/14/2010	Anonymous	that the space would be used more to help build and strengthen community connections.
6/14/2010	Anonymous	The opportunity to create a more beautiful, useful, and efficient space.

6/14/2010	Anonymous	That so far we have all maintained a civil manner. No matter how things turn out, the Meeting and each F/friend will grow in ways they (or we) never expected. The LRP Committee has set this tone. This process we take on together requires trust, openness and a willingness to see our future. No one gets very many opportunities like those we have opened ourselves to. The idea that the future is known from holding the past and the present in the Light. This Meeting was established through a deliberate union of (almost) opposing tenants of Friends. Friends worked hard to deliberately stay open to each others Friend-ly views and manners. The approach that has been taken to propose/face hard decisions keeps that original union ever present for me. Everything is joyful, everything is exciting - no matter what.
6/14/2010	Anonymous	Just that we would have a cleaner more aesthetic and pleasing environment. Simple doesn't have to mean unkempt and shoddy. Good stewardship seems in line with Quaker values although I know not everyone agrees.
6/15/2010	Anonymous	The current facilities are quaint, lovely, and spiritually infused. Also, a little dumpy. They'd benefit from some modernization and sprucing up!
6/15/2010	Anonymous	We are ready to make some substantial changes – whatever they are – and they will make the place better than the current facility.
6/15/2010	Anonymous	I like the idea of updating some of the facilities we already have, and maybe re-arranging spaces, so for instance files are no longer stored in boxes in front of the window in the JYF classroom.
6/16/2010	Anonymous	I look forward to giving all age groups enough classroom space.
6/16/2010	Anonymous	That many people in the Meeting seem to have been positively engaged in the process of considering these issues and that several members have been willing to invest very considerable time and effort into assessing the options. The process has made us contemplate what are the core needs and values of the Meeting.
6/17/2010	Anonymous	I would like to be able to see large events at the meeting that would be possible through the new space.
6/17/2010	Anonymous	I am happy to see the care put into improving the facility.
6/17/2010	Anonymous	more opportunities for interaction because of increased space; ability to welcome those who need handicap accessibility
6/17/2010	Anonymous	having an attractive, functional, welcoming space (preferably one we can afford)
6/17/2010	Anonymous	That maybe some green work will come of it. Meeting with small QEW group gives me some hope.
6/17/2010	Anonymous	We have an opportunity to make our space more welcoming to all, more in harmony with the earth and more reflective of our spiritual purpose.
6/17/2010	Anonymous	It would be great if the facilities were handicapped accessible, energy efficient and without all the mold.
6/18/2010	Anonymous	I am impressed that you are spending time to conduct this survey so I expect the end result will create joy for most of you.
6/18/2010	Anonymous	That I won't smell mildew when I walk in the Meetinghouse!
6/18/2010	Anonymous	It is very positive that we are working on this issue as a community, so it's not only addressing our facilities, but building relationships within our worship community.
6/18/2010	Anonymous	I don't really know of anything that I would like changed about the meeting, so this part is a little difficult. I guess my joy would be that we want to ensure that hypothetical people who may want to join the meeting in the future will be able to because there is enough space. That proposal seems very welcoming and Quakerly to me.
6/19/2010	Anonymous	I think it is commendable that so many people are involved in considering these issues.
6/19/2010	Anonymous	i would love to have a building that didn't drain our time and resources and i would love to have a larger space for community gatherings that require a larger space than the meeting rooms.
6/19/2010	Anonymous	My greatest joy is to imagine that the energy behind this initiative would be put into modest improvements to the current facilities at their current location, thereby freeing the Meeting to focus its energies on other worthwhile activities.
6/19/2010	Anonymous	I'd love to have enough first day school classrooms and a small office for the records (which are somewhat scattered now and not at all secure). The two buildings just don't meet the needs of a meeting of our size.
6/20/2010	Anonymous	I greatly appreciate the work you all are doing to shepherd us along in a mindful way as we try and determine what we want to do with our facilities over the next 30 years and more. I look forward a decade to having lovely space to work with everyone in.
6/20/2010	Anonymous	Trying to improve the facilities, making them truly handicapped accessible and eco-friendly
6/20/2010	Anonymous	When Susan was here, things were beautiful because she cared. Perhaps change on scale of what Susan did COULD HAPPEN NOW!!!
6/20/2010	Anonymous	It would be pleasant to have a nicer kitchen and more useable white house basement. HOWEVER, I do not think a new facility is necessary to achieve this.
6/20/2010	Anonymous	Better accessibility and aesthetics.
6/20/2010	Anonymous	The opportunity to create sound, attractive, efficient spaces that enhance our spiritual practice.
6/21/2010	Anonymous	Something needs to be done!
6/21/2010	Anonymous	That we might be rid, for once and for all, of the dingy moldy inhospitable basement spaces.
6/29/2010	Anonymous	It would be nice to be connected to the Friends community school. it would also be nice to make improvements to the current Friends meeting house.

7. General Comments

7.1.

Response counts for survey 'Adelphi Building Our Future: Confidential Survey'

	Before filtering	After filtering
Partial responses (unique respondents)	24 (24)	24 (24)
Completed responses (unique respondents)	107 (107)	107 (107)

7.1.1. P7Q3

Please add here any additional comments you want to make about these or other issues.

Question type: Open ended

Number of responses: 57

Number of respondents: 57

Date	Respondent	Answer
6/6/2010	Anonymous	I wish we considered safety more: fire and electrical safety; protecting our children.
6/6/2010	Anonymous	keep up the great work!
6/6/2010	Anonymous	I know that the parking is an issue -- has any thought been given to buying or leasing the vacant lot across the street and parking there? Paving stones or rocks could be put down that would let rainwater go through -- it doesn't have to be blacktopped to be useful, though it would require tending in the winter.
6/6/2010	Anonymous	I have a lot to say but I don't feel like I can fit it into a questionnaire.
6/6/2010	Anonymous	Maintaining our property is a huge job. I think it is important to budget for a part-time paid maintenance person, or we will fall right back into not maintaining our new improvements. This is too huge a job for volunteers only. There is a difference between making needed improvements, and making things "new" when that could cause a sterile quality to what is quite homey now. For example, a Young Friend commented that the kids liked the "funky" quality of their space in the White House. Why should this be changed?
6/6/2010	Anonymous	For the most part, I like the present facilities. We may be getting too large for them, in which case perhaps we should split. Maybe one meeting at Adelphi and one at FCS?
6/6/2010	Anonymous	i support the project, but am wary.
6/6/2010	Anonymous	We need sessions in which we have conversations with each other versus just presenting our perspectives. We need more opportunities to discuss these issues. Some people are very informed and others are still unfamiliar with the written materials, historical documents or presentations/ second hours that got us here. Just need time for everyone to get on the same page to have a real--and I hate this word--dialogue!
6/6/2010	Anonymous	I keep hearing that this process is bringing up old wounds and rifts and the need for Adelphi to improve at dealing with interpersonal conflict. I agree with this, and I would like to see this happen immediately. Not just going forward with nonviolent communication skills, although that is important and should be part of the process, but, for example, there is a rift in the meeting over FCS. I don't even know what all went on, I wasn't here when the school was started. I do know from hearing pieces here and there that some people were very upset about the school, and that issues around the school and its relationship to meeting have continued to arise. So, I would like to sit down in community and bring it to light. Those who were and are upset should speak to that. Especially as some of the scenarios involve FCS, I don't see how we will come to unity if some people still feel that the school is a toxic topic, and I believe this process needs to happen before we can come to unit
6/6/2010	Anonymous	I used to attend Adelphi and then switched to Takoma Park since it's closer to home, and my son has grown up. Last time I went to Adelphi meeting, all seats were full. After 20 minute silent period was over, all children left. I was amazed that around half of seats had been taken by children (and they had been so quiet.)
6/6/2010	Anonymous	No one has mentioned an outdoor remaking. How about a pavillion/meeting site outdoors for being closer to nature as we worship or do our business together?
6/6/2010	Anonymous	We have plenty of time and can progress slowly.
6/6/2010	Anonymous	I'd like more consideration paid to ease of reaching the meeting by public transportation. FCS is isolated, so it's better for car drivers, as is Adelphi. There is space in Greenbelt, particularly for a meeting that does not need its own property. Let's look into that, and enhancing Takoma Park.
6/6/2010	Anonymous	Thank you for making a questionnaire that seems so direct, to the point, and easy to answer.
6/6/2010	Anonymous	I am sure that whatever we decide to do, we will in the end wind up with a worship space that allows us to hear one another, provides a comfortable and welcoming setting for our elders and those with physical "disabilities," and includes lots of natural light. I am concerned that in the meantime - while that space is being modified or built from the ground up - that we somehow find a way to gather together each week in a place in which we can literally hear one another, and face one another, during worship. I keep remembering the few times we've worshipped in the FCS gym, and how alienating that was. I couldn't see people, or hear the messages during Meeting for Worship. I don't want to spend months worshipping in such a space, because of the damage that could do to worship and to our community altogether. We will lose people if we can't hear one another, and I don't want folks to leave temporarily or permanently.
6/6/2010	Anonymous	Prefab!
6/6/2010	Anonymous	Thanks for your earnest, thorough and continued work with these important concerns.
6/6/2010	Anonymous	As long as the school is to be operated independently of meetings business process Meeting must not be vulnerable to school mismanagement. Keep the fate of the two separate. This does not mean that I would completely oppose a move to the same location as the

		school but I would want the lot divided so that any legal action or financial failure of the school could not take meeting down with it.
6/7/2010	Anonymous	Adelphi is somewhat unique in that it is a Meeting that has been growing, and continues to grow. That presents, for me, the opportunity to expand elsewhere.
6/7/2010	Anonymous	Making changes in facilities that will be attractive, eco-friendly, and open to all should motivate all of us to spend more time with our faith community, increasing our openness to each other, irregardless of age, and inspiring us to be better neighbors in the surrounding community and find areas of service for more members of the meeting.
6/7/2010	Anonymous	We desperately need storage space for Meeting records where heat, cold, and humidity can be controlled. We need better spaces for socializing, for meeting, and for First Day School.
6/7/2010	Anonymous	If we engage in a major building campaign, I would like the design to allow a greater connection with the outdoors.
6/7/2010	Anonymous	Thank you, Friends, for asking these difficult questions, and for being so respectful of the community, which, perhaps like me, isn't sure yet of what its desires are.
6/7/2010	Anonymous	We must be fearless and yet loving in addressing and resolving our differences; the decision making process on this critical matter is being seriously hampered by unresolved differences other issues from the past.
6/7/2010	Anonymous	I really like the Meeting House (upstairs) the way it is.
6/8/2010	Anonymous	Thanks for all the work! I wish I could contribute more time these days.
6/8/2010	Anonymous	Thanks for hearing all of us out!
6/8/2010	Anonymous	I dislike anonymous surveys. These responses were submitted by Keith Jahoda
6/9/2010	Anonymous	I think the Listening committee is doing a wonderful job of trying to avoid my concern (see above) and getting people to think in an open-ended way as much as they can. Thanks so much for your work!
6/9/2010	Anonymous	I know some have expressed concern about whether focusing on such weighty and potentially expensive issues will cause a strain in our community. But I would remind these folks that the way we have been doing things now (or not doing them) has also created a strain for far too long, and imposed a heavy burden on too few volunteers.
6/10/2010	Anonymous	I am not skilled in evaluating construction or architectural projects. I am happy to have people who have these skills refine proposal(s) and present them to me in a thorough and articulate fashion. I am probably not going to participate heavily in the deliberation process – I have other places and things where I have skills that call me.
6/10/2010	Anonymous	Although I am no longer a member of Adelphi, I continue to care about the community. I appreciate having my opinions included in the survey. Of course, I hope that the Meeting can move to the FCS campus. Jane Manring
6/11/2010	Anonymous	once again as a young friend who has been at the meeting all his life and has always felt welcome and happy and comfortable i would like to say that we should not try to change a good thing.
6/11/2010	Anonymous	Let's go for it! It's time.
6/11/2010	Anonymous	How do i know that my survey was received?
6/11/2010	Anonymous	Very exciting times. Opening up lots of opportunities to address old issues. Like the leadership and the participation from so many people.
6/13/2010	Anonymous	I will contribute financially to the future of this meeting, but I will not contribute to surrounding ourselves with trendy, labeled, social artifacts like solar power or green roofs.
6/13/2010	Anonymous	A field trip to Langley Hill Meeting would be so helpful. What they have accomplished is breathtaking.
6/13/2010	Anonymous	I appreciate greatly the hard work and creativity of the facilities group. Keep up the wonderful work!
6/14/2010	Anonymous	If an additional building were to be built, a more functional nursery would be nice. By this I mean a child-size toilet and sink being inside it, at least one crib, updated furniture and storage space, and a fenced-in playground off of the room. As it is, a toddler who is being toilet trained can not be helped because Pouran can not leave the room while other children are present and needing care.
6/14/2010	Anonymous	Process - There will always be people who feel left out, people who want to influence outcomes in their favor. People who will be disgruntled, people who will give up in frustration. The process has expanded to include issues that are not strengths of this Meeting. But if they are not addressed, they will simply travel with Friends to a new Meeting space, a new Meeting, a changed spiritual life. Jh, THANK YOU for enabling Spell Check!
6/14/2010	Anonymous	I would love to see an improvement in our property and buildings. Some maintenance and improvements have already been made in the last 5 years or so. For example: the Memorial Garden, removal of many trees, new steps and doors. Little things are being done to improve the property but we are operating from a backlog of needs to be addressed. The question is whether or not continuing down this path is cost effective if buildings are to be replaced. The White House has some large cracks in the foundation, One Meeting House wall is braced off to keep it from slowly falling. Thanks for all your hard work and concern about improving Meeting buildings and grounds. We are not proposing a Cathedral so I think spending some money on making the place attractive and functional is not out of line with Quaker value of simplicity.
6/15/2010	Anonymous	I'd like to see the size of Takoma Preparatory Meeting grow. Currently, it feels a little too small, insular, needy, and dependent on every body that walks through the door. If there were a split, perhaps some people would go there? (I'd see that as a very good thing for Takoma Meeting!)
6/16/2010	Anonymous	"Thank You" to all who have invested their time and effort into this process.
6/17/2010	Anonymous	It makes sense to me to move the meeting to FCS and I think it would a significant benefit to both entities.
6/17/2010	Anonymous	Would like to have seen a survey with more concrete proposals
6/17/2010	Anonymous	We need to get more clear about our spiritual focus before making decisions about major changes to our physical structure. Building changes should flow from our spiritual vision.
6/17/2010	Anonymous	I'm excited about the proposed changes to the facilities, but realize that it will probably take a lot of resources to bring them about.
		Well I miss some of you and the Meeting itself but I certainly have a niche here in Richmond, Indiana as clerk of Peace & Social Concerns

6/18/2010	Anonymous	Committee for Clear Creek Meeting and being nominated for the same for Ohio Valley Yearly Meeting. It is a lonely position sometimes as Meeting members here are much less active in peace & social concerns. Did you see my forum letter on Israel/Palestine in April's Friends Journal? Pete and I are enjoying retirement.
6/18/2010	Anonymous	I'd like to thank the members of Meeting who are working hard on developing this process and guiding us through it.
6/19/2010	Anonymous	i think that we need to make the decision about large/small meeting before we go much further. if we decide to split the meeting, then the repair/refurbish plan would likely work quite well. if we are to stay at this size or grow a bit, the present plant is too small right now and the build new/expand plan should be implemented
6/19/2010	Anonymous	If the school wanted us to come, and if it were willing to pay for some of the construction, and if we could sell the property for enough money, I'd be willing to move...not happy, but willing. But I haven't seen evidence that any of those factors are present yet, nor do I sense a widely-held feeling that most Adelphians are interested in moving.
6/20/2010	Anonymous	If we do not have nandicapped accessible bathrooms, we need to do this. Also, basemenmt of white house needs better ventilation, as does kitchen.
6/20/2010	Anonymous	Thank you for doing this. * Is FCS Metro accessible? I do also believe that if we decide to go to the school, money should be put aside to help Takoma Park to buy a building for that meeting to grow into, preferably Metro accessible.
6/20/2010	Anonymous	How to incorporate the principle of self care into this process. As we care for our meeting property and quality of life together we will be better able to care for others -- intentionally -- by designating time and resources. And, as an example, because our life as a meeting will speak.
6/20/2010	Anonymous	It is important to consider developing the Meeting on FCS grounds.
6/21/2010	Anonymous	I think that the money can probably be raised whatever option we choose, but feel VERY strongly that we should make a commitment that whatever we raise should be split between Meetinghouse improvements and good works.

Powered by NoviSystems.com